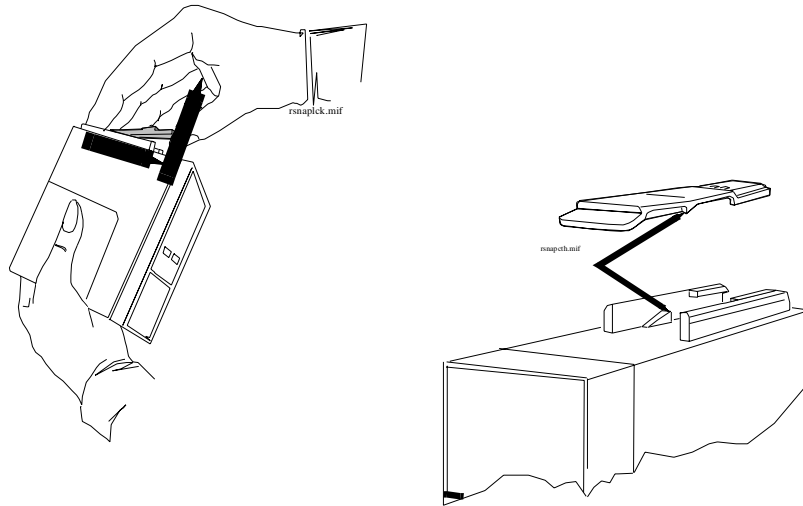


Plug-in Modules and MMS Extensions

The snap lock holds the plug-in module in the FMS.



To remove the snap lock:

- 1 Grip the module firmly in one hand and using your thumb, pull the front edge of the snap lock away from the plug-in module so that the lug on the snap lock clears the retaining edge of the module.
- 2 Push on the rear edge of the snap lock to move the snap lock through the slot toward the front of the module until it is clear.

To replace the snap lock:

- 1 Locate the snap lock into the slot on the bottom of the module.
- 2 Slide the snap lock toward the rear of the module until the lock snaps into position.

Plug-In Module Disassembly

Disassembly of the parameter module enables replacement of the front assembly.

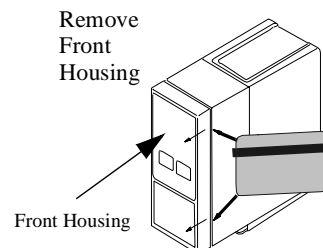


Figure 7 Removing the Module Front Housing

WARNING When you disassemble/assemble a plug-in module a patient leakage current test must be performed before it is used again for monitoring.

To disassemble a plug-in module:

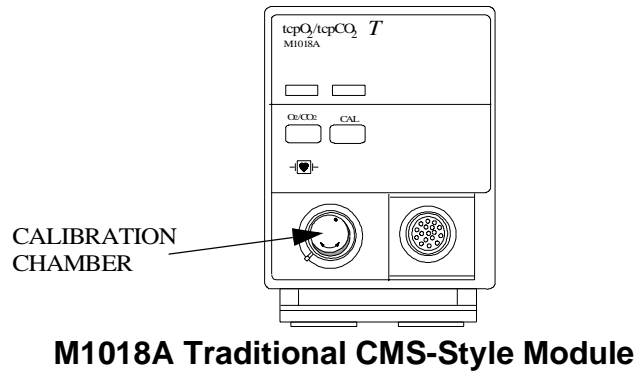
Remove the front housing.

- Place the module on a flat surface and insert a card (similar to a credit or cheque type card) into one side of the module to disengage the 2 tabs securing the front housing to the module housing.
- Pull the edge of the front housing away from the module housing.
- Carefully turn the module over so the free edge does not reengage and repeat the first two steps on the other side of the module. The front housing should now be free of the module housing.

To reassemble a plug-in module:

Snap-fit the front housing onto the front of the module case so the openings in the front housing match the LEDs and keys.

tcpO₂/tcpCO₂ Calibration Chamber Kit



Front Housing



Calibration Chamber



Front Housing with Calibration Chamber

M1018A New Style Module

NOTE You must order a new front housing AND a new calibration chamber kit when repairing a traditional CMS-Style M1018A module. The calibration chamber must be replaced first for the new style housing to fit properly

To remove the calibration chamber

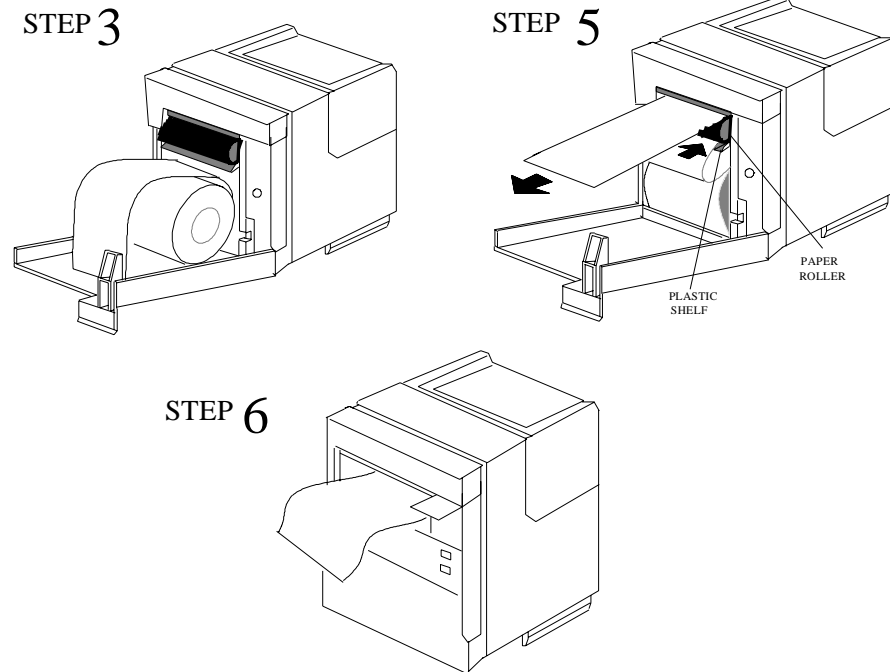
- 1 Using a flat-tipped screwdriver, remove the screw holding the calibration chamber in place on the front of the plug-in module.
- 2 Lift the chamber off the plug-in module. Ensure that the white plastic switch tip located in the module is not lost.

To replace the calibration chamber

- 1 Ensure the white plastic switch tip is in place in the plug-in module.
- 2 Place the calibration chamber in the allocated position on the plug-in module.
- 3 Insert and tighten the screw into the calibration chamber, securing it to the plug-in module.

Recorder Module Paper

The recorder will not run when the door is open or when the recorder is out of paper. To prevent damage to the recorder module, use only Philips approved paper (Philips re-order number 40477A/B)



To load paper into the recorder module:

- 1 Remove the empty core from the previous roll of paper.
- 2 Cut off and discard the first few inches of paper to eliminate any traces of adhesive.
- 3 Pull out several inches of paper from the new roll, holding the roll with the loose end hanging over the top toward you.
- 4 Open the door and push the paper roll into the holders in the recorder.
- 5 Thread the paper under the roller and over the plastic shelf far enough so it goes around the roller and comes out above it.
- 6 Drape the paper over the end of the door and close the door. The paper should be visible and draped down in front of the door.