
Disassembly for the Monitor

Removing the Battery

To remove the battery, do the following:

- Step 1** Slide the battery compartment door toward the rear of the Monitor, and open it down.
- Step 2** Locate the battery extractor tape and pull it to disengage the battery socket.
- Step 3** Pull the battery out.

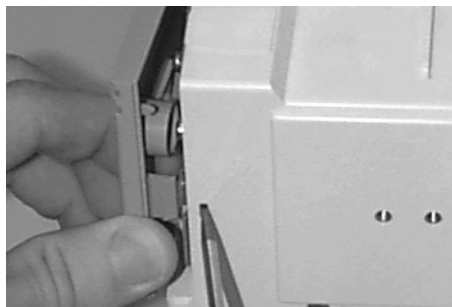
Removing the Power Supply

Read the warnings at the beginning of this chapter.

You must remove the Power Supply to access the fuse.

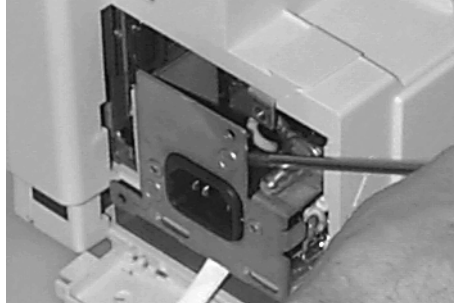
To remove the Power Supply, do the following:

- Step 1** Remove the Measurement Server and, where present, the Measurement Server Extension.
- Step 2** Remove the battery.
- Step 3** Switch on the Instrument and disconnect the AC power cord from both the Instrument and the mains power source (after 20 seconds, the capacitors on the Power Supply board are drained).
- Step 4** Push a thin-bladed screwdriver into the hole next to the cover:



- Step 5** Release the cover.
- Step 6** Remove the two anti-vibration screws. (These are the only anti-vibration screws and must be refitted. Do not lose these screws.)

Step 7 Slide out the Power Supply:



Removing the Chassis

Read the warnings at the beginning of this chapter.

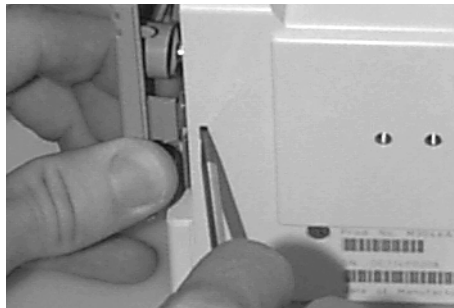
To remove the chassis, do the following:

Step 1 Remove the Server.

Step 2 Remove the battery.

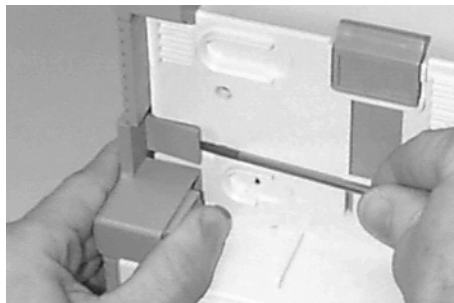
Step 3 Switch the Instrument on and disconnect the AC power cord from the Instrument and the mains power source (after 20 seconds, the capacitors on the Power Supply board are drained).

Step 4 Push a thin-bladed screwdriver into the hole next to the cover:

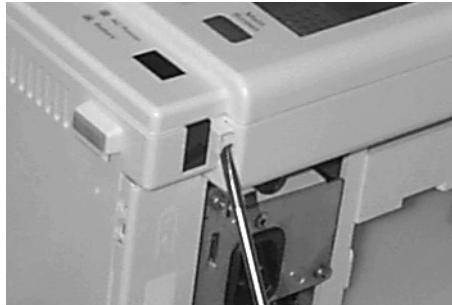


Step 5 Release the cover.

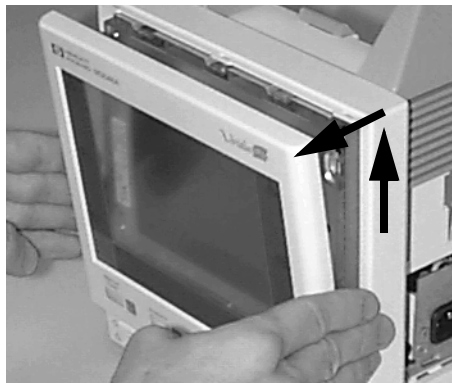
Step 6 Prise open the clip on the Server-to-Monitor link bar and slide it off. On newer monitors just turn the catch (holding the link bar) into the vertical position:



Step 7 Lay the Monitor on its rear panel and pull out the two latches - there is one on each side of the Monitor Bezel:



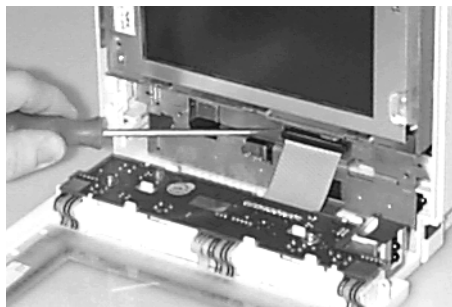
Step 8 Stand the Monitor up again and gently lift the Monitor Bezel up and out. Gently let it rest in front of the Monitor. Be careful. It still has a cable attached:



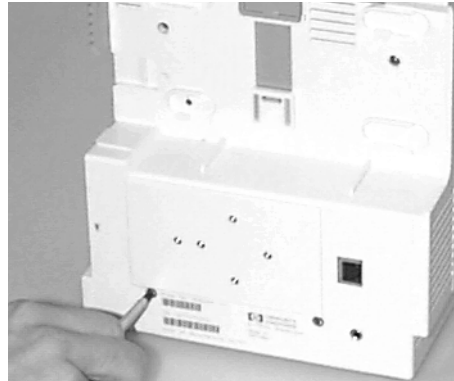
Step 9 Remove the white plastic clamp securing the ribbon cable connections. To remove, push the latch at the top left corner to the left.

NOTE

Step 10 Use a small screwdriver to remove the Monitor Bezel assembly cable:
Do not touch the LCD display

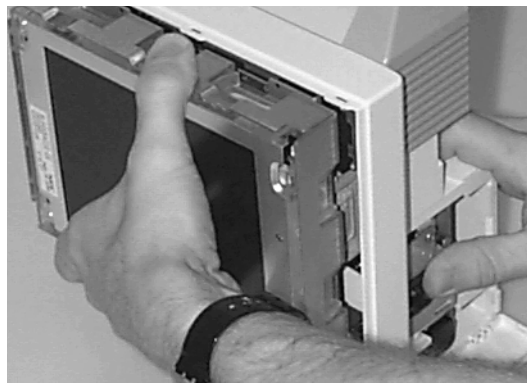


Step 11 Remove the four screws from the rear panel:



Step 12 Slide the chassis slowly out from the front of the housing (the battery compartment cover must be open), and lay the chassis on the Monitor Bezel

For Monitors with a Wireless LAN Assembly: To avoid antenna damage, slide the chassis very carefully out from the front of the housing, **disconnect the antenna cable** and lay the chassis on the Monitor Bezel:



1

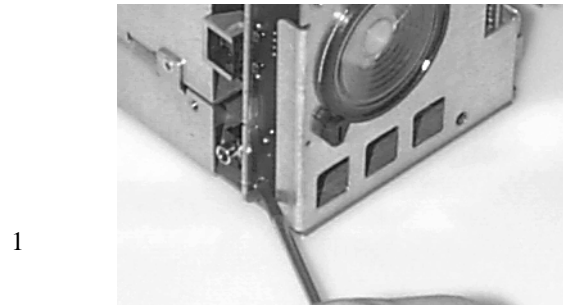
Removing the System Board

To remove the System Board, do the following:

Step 1 Remove the Power Supply as described previously in this chapter.

Step 2 Remove the chassis as described previously in this chapter.

Step 3 Remove the screw which secures the connector board, then pull out the Connector Board:

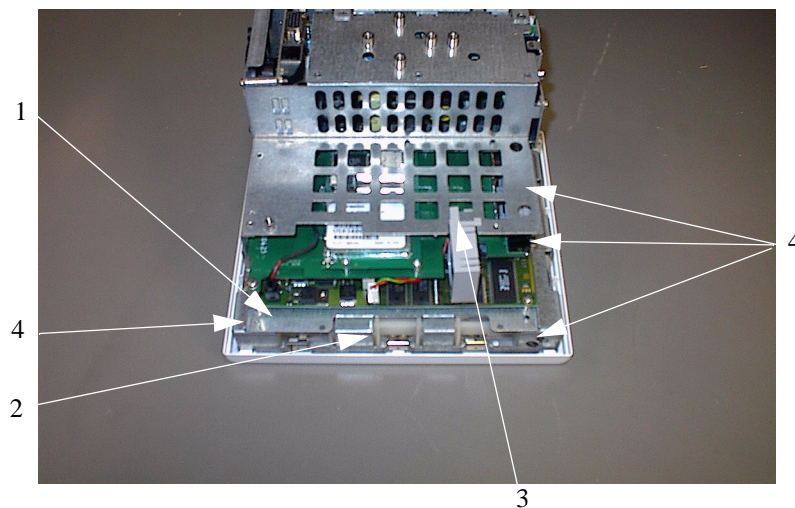


Step 4 Use a small screwdriver to disconnect the Display Assembly cable:



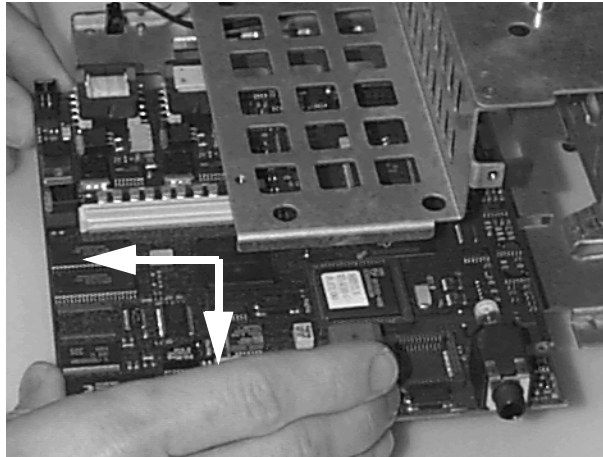
Step 5 Lay the chassis face down on a clean, scratch-free surface.

Step 6 Disconnect the loudspeaker cable (1).
For Monitors with Wireless LAN assembly: Disconnect the ventilator wires (2) from the system board. Unclip the fan assembly from the metal sheet (3) and pull forwards to remove:



Step 7 Remove the 4 System Board screws (4).

- Step 8** Withdraw the board from the chassis towards and slightly to the right of you to avoid hitting the chassis:



Removing the Wireless Assembly (for Monitors with Wireless LAN Interface only)

- Step 1** Remove the Server as described previously in this chapter.
- Step 2** Remove the battery as described previously in this chapter.
- Step 3** Remove the chassis as described previously in this chapter.
- Step 4** Remove the system board, complete with the wireless LAN assembly, as described previously in this chapter.
- Step 5** Lift the wireless assembly up to release the connector, then remove the assembly from the system board.

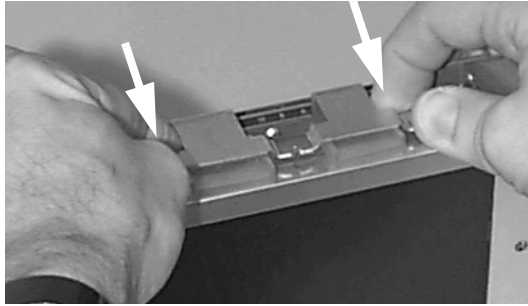
Removing the LCD Assembly and Backlight Tubes

This procedure describes how to remove the LCD Assembly which includes the LCD screen and rubber anti-vibration cushion. Once the assembly has been removed, the backlight tubes can be removed and replaced.

Although you need to remove the chassis, you do not need to remove the System Board or the Power Supply.

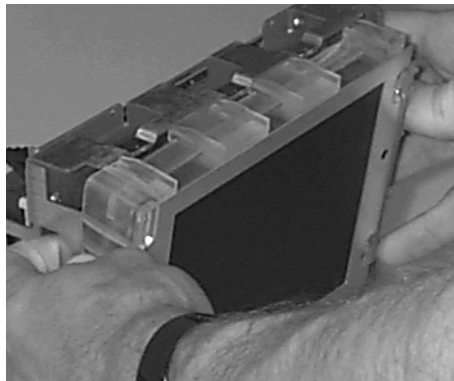
To remove the LCD Assembly, do the following:

- Step 1** Remove the chassis as described previously in this chapter.
- Step 2** Use a small screwdriver to remove the Display Assembly cable.
- Step 3** Push the complete assembly (including the rubber cushion, the LCD display, and the cables) out from the rear of the chassis. Start pushing from the top being careful not to damage or bend the 6 clips around the cushion:

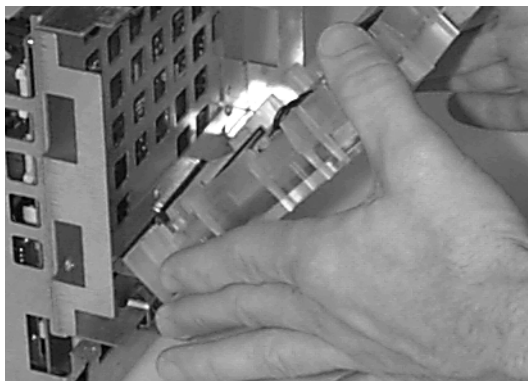


Never touch the front of the display assembly (the screen), or the backlight tubes, with your fingers. Doing so can reduce the lifetime of the parts.

Step 4 Then push from the sides:

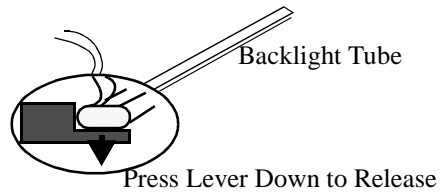
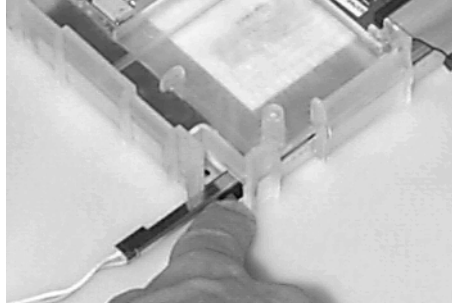


Step 5 Lay the LCD display on a flat, scratch-free surface:



Step 6 Unplug the backlight tube cables.

Step 7 Press down the retaining lever to release the backlight tube:



Step 8 Slide out the tube and repeat for the second tube.

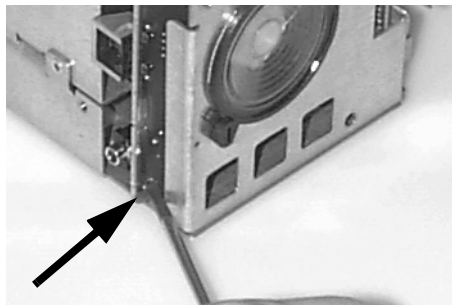
Removing the Connector Board

To remove the Connector Board, do the following:

Step 1 Remove the chassis as described previously in this chapter.

Step 2 Remove the Power Supply as described previously in this chapter.

Step 3 The Connector Board (VGA) is fixed with a screw and can no longer be taken out by removing the Connector Board cover and pulling the Connector Board out. The Plastic Housing must be completely removed to allow the Connector Board to be unscrewed from the side of the Monitor:



Removing the Speaker

To remove the speaker, do the following:

Step 1 Remove the chassis as described previously in this chapter.

Step 2 Remove the Power Supply.

Step 3 Remove the Connector Board.

Step 4 Disconnect the speaker cable running to the System Board.

Step 5 Rotate the two plastic holders retaining the speaker.

Step 6 Remove the speaker.

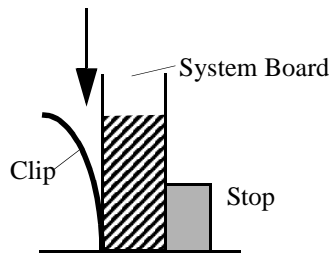
Refit Procedures for the Monitor

Refitting the System Board

To refit the System Board, complete the steps for removing the System Board in reverse.

When refitting the System Board please observe the following:

- Be careful not to strike the metal chassis with parts.
- Make sure the speaker cable is not trapped when the System Board is inserted.
- Wait until the System Board is in place before positioning the screws, otherwise they may fall out when you do the next step.
- Slightly raise the end of the System Board and push down and forward to engage the retaining clips on the chassis.
- Make sure the bottom edge of the System Board sits correctly in the clips to give a good electrical contact:



Refitting the LCD Assembly and Backlight Tubes

To refit the LCD Assembly and backlight tubes, complete the steps for removing the LCD Assembly and backlight tubes in reverse.

NOTE

When you push the Display Assembly back into the chassis, make sure that the 6 clips around the cushion are still in place and are not bent.

Refitting the Connector Board

To refit the Connector Board, complete the steps for removing the Connector Board in reverse.

Refitting the Speaker

To refit the Speaker, complete the steps for removing the Speaker in reverse.

Refitting the Power Supply

To refit the Power Supply, complete the steps for removing the Power Supply in reverse.

NOTE

When replacing the Power Supply, make sure it slides into the guide rails provided in the chassis. Be sure to refit the anti-vibration screws.

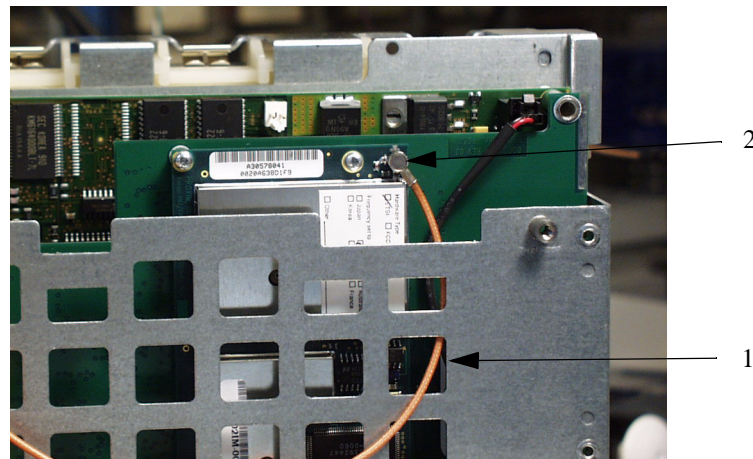
Refitting the Wireless Assembly

To refit the wireless assembly, complete the steps for removing the wireless assembly in reverse.

Refitting the Chassis

To refit the chassis, complete the steps for removing the chassis in reverse. When reconnecting the Antenna Cable, observe the following:

- Route the free end of the antenna cable through the middle hole (1, below) in the right-hand column of three holes, as viewed from the back side of the sheet metal:



- Connect the free end of the antenna cable to the connector on the corner of the wireless LAN board (2, above).

Refitting the Battery

To refit the battery, do the following:

- Step 1** Slide the battery compartment door toward the rear of the Monitor, and open it down.
- Step 2** While holding the battery extractor tape up and out of the way, insert the battery with the battery guide-groove facing up and the battery socket towards the inside of the Monitor.
- Step 3** Push the battery all the way into the compartment making sure the socket is firmly engaged (the battery can be pushed no further).
- Step 4** Close the battery compartment door.