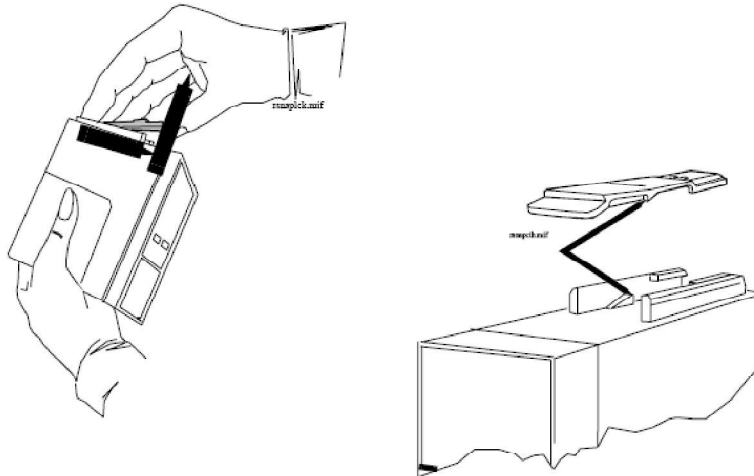


## Plug-in Modules

The snap lock holds the plug-in module in the FMS.



To remove the snap lock:

- 1 Grip the module firmly in one hand and using your thumb, pull the front edge of the snap lock away from the plug-in module so that the lug on the snap lock clears the retaining edge of the module.
- 2 Push on the rear edge of the snap lock to move the snap lock through the slot toward the front of the module until it is clear.

To replace the snap lock:

- 1 Locate the snap lock into the slot on the bottom of the module.
- 2 Slide the snap lock toward the rear of the module until the lock snaps into position.

## Plug-In Module Disassembly

Disassembly of the parameter module enables replacement of the front assembly and rear housing.

---

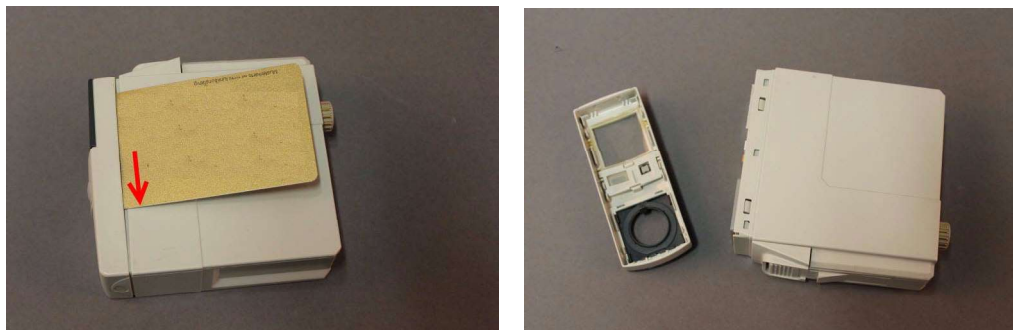
### WARNING

When you disassemble/assemble a plug-in module an applied part leakage current test must be performed before it is used again for monitoring.

---

### Removing the Front Housing

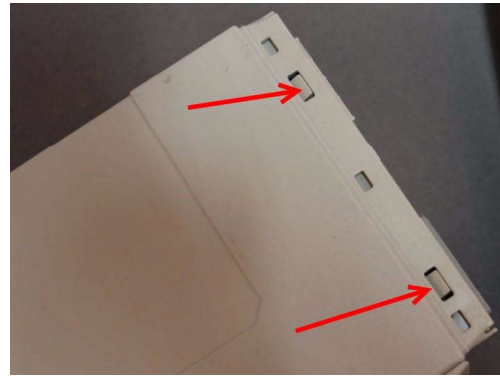
- 1 Place the module on a flat surface and insert a card (similar to a credit or cheque type card) into one side of the module to disengage the three tabs securing the front housing to the module housing.



- 2 Pull the edge of the front housing away from the module housing.
- 3 Carefully turn the module over so the free edge does not reengage and repeat the first two steps on the other side of the module. The front housing should now be free of the module housing.

#### Removing the Rear Housing

- 1 Use a small flat-head screwdriver to release the snap-fit locks which hold the rear housing to the chassis. For easier release of the snap-fit locks, gently push on the socket connector at the rear so that the locks cannot reengage.
- 2 Carefully turn the module over so the free edge does not reengage and repeat the first step on the other side of the module. The rear housing should now be free of the module chassis.



- 3 Pull out the chassis from the rear housing.

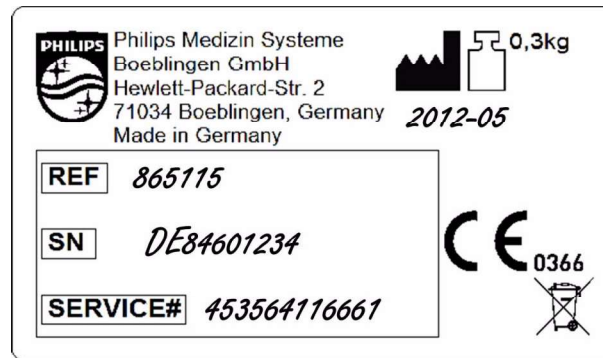


#### Reassembling a Plug-in Module

- 1 Carefully push the chassis into the rear housing until the snap-fit locks engage. The socket connector must fit into the opening in the back of the rear housing. If it does not, turn the chassis around.
- 2 Please transcribe the following information from the label on the back of the old rear housing onto the adhesive label delivered with the new rear housing:
  - Date of Manufacturing (below the Factory Icon)
  - PMS / Part Number (REF)
  - Serial Number (SN)

## 5 Repair and Disassembly

- Service Number (Service #)



- 3 Use a water-resistant pen for transcribing, and then place the adhesive plastic lid over the writing. Stick the whole adhesive label on the back of the rear housing.
- 4 Snap-fit the front housing onto the front of the module case so the openings in the front housing match the LEDs and keys.

### tcpO2/tcpCO2 Calibration Chamber Kit



Front Housing



Calibration Chamber



Front Housing with Calibration Chamber

*M1018A New Style Module*