

4-Slot Flexible Module Rack (FMS-4) Disassembly (without MMS Mount)

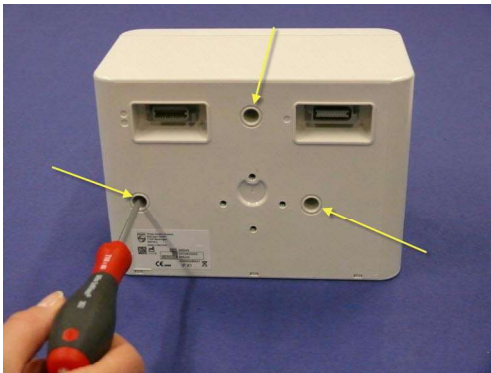
Separating the Front and Back of the 4-Slot FMS

- 1 If the Universal Mounting Clamp is installed, remove the two screws (T20) from the Universal Mounting Clamp and remove the clamp.

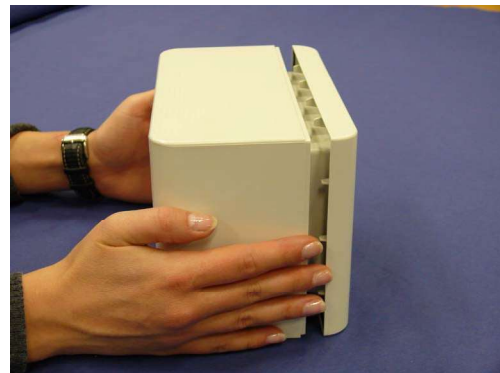


If any other mounting bracket is installed, remove it.

- 2 Remove the three screws (T10) from the back of the FMS.



- 3 Push the front housing off with your hands.



- 4 If you are exchanging the rear housing, check the information on the old housing label:
 - Product Number (behind REF),
 - Serial Number (SN),
 - Service Number (If existent – Service#)

5 Repair and Disassembly

- Date of Manufacturing (DOM; under the factory icon in the format YYYY-MM or old MM/YY) or, if on the existing label: Date of Refurbishment (DOR; under the factory icon in the format YYYY-MM, and additionally Date of Refurbishment transferred under the date).

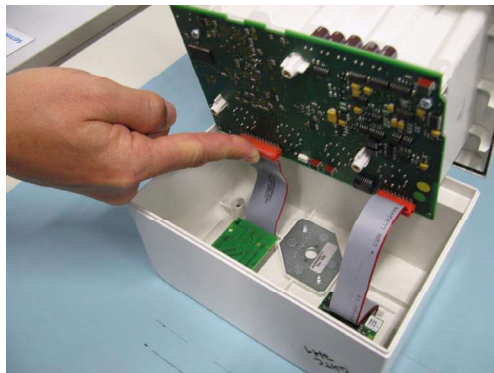
Locate the appropriate position on the new rear housing label.



Copy all information onto the new Rear Housing label from the old Rear Housing Label using a water-resistant pen.

Paste the additional adhesive clear blank label on top of the updated replacement rear housing over REF, SN, Service#, and DOM to avoid smearing and provide protection.

- 5 Flip the back of the FMS down, resting the front of the FMS on the rear housing as shown below. Then unplug the two cables from the main board.
- 6 Reassemble the FMS by performing the above steps in reverse order. When reassembling the front and back of the FMS, make sure the cables are inserted into the main board as shown below.

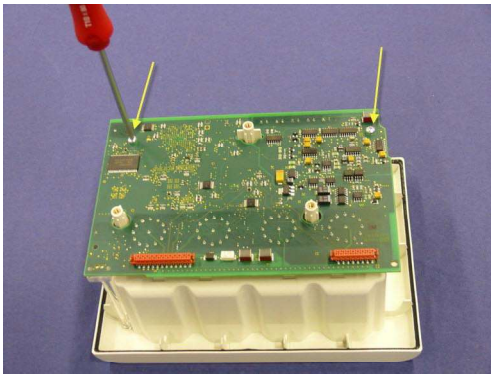


Make sure that the screws in the rear cover of the FMS are tight enough so the FMS is properly sealed.

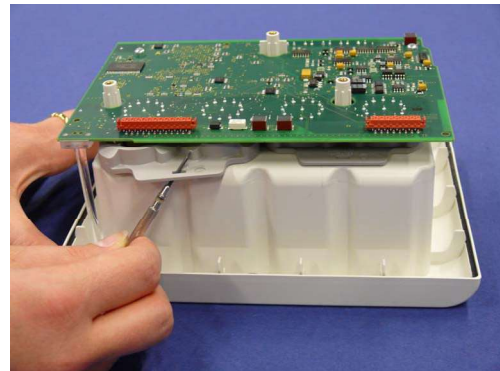
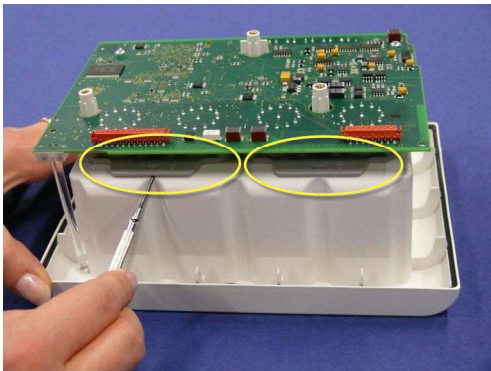
Removing the Main Board

- 1 If installed, remove the Universal Mounting Clamp.
- 2 Separate the front and back of the FMS as described in [“Separating the Front and Back of the 4-Slot FMS” on page 211](#).

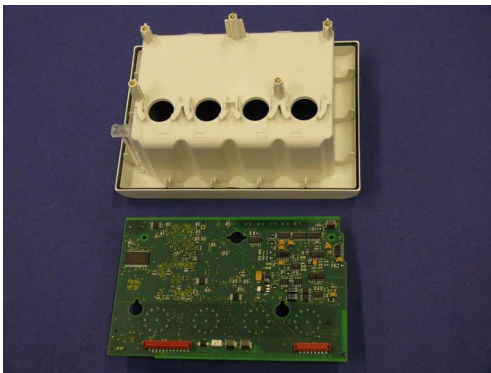
- 3 Remove the two screws (T10) from the main board.



- 4 Pull out the two connector holders with a flathead screwdriver.

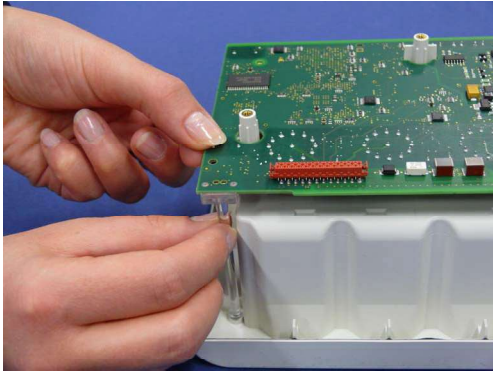


- 5 Remove the main board.



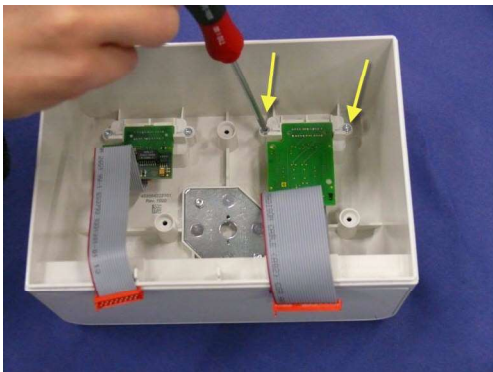
5 Repair and Disassembly

- 6 Reassemble the FMS by performing the above steps in reverse order. Make sure that the light guide is in its correct position (see picture below) and reinsert the connector holders by pushing them in until you hear a click.

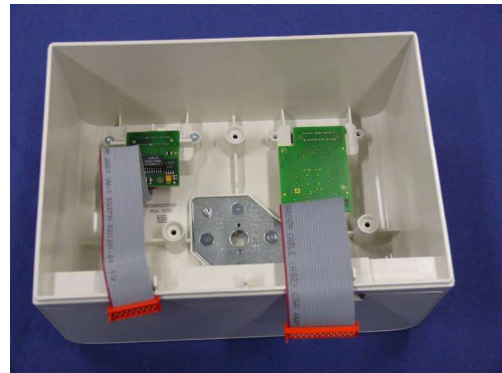
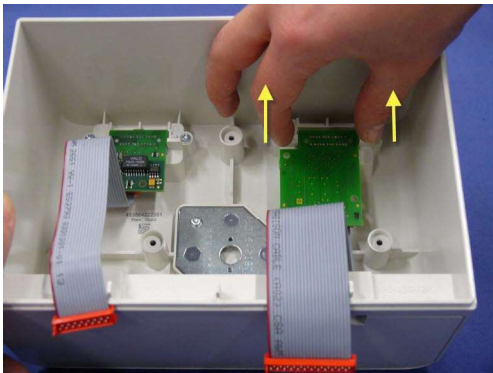


Removing the MSL Boards

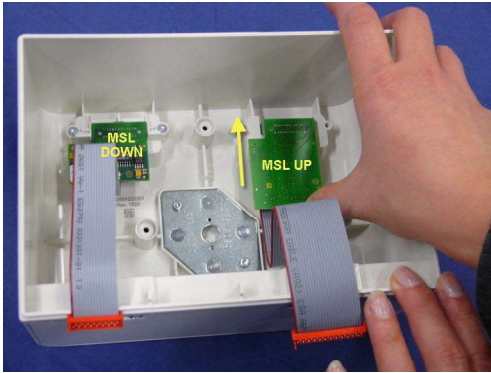
- 1 Separate the front and back of the FMS as described in [“Separating the Front and Back of the 4-Slot FMS”](#) on page 211
- 2 Remove the two screws from the MSL holder.



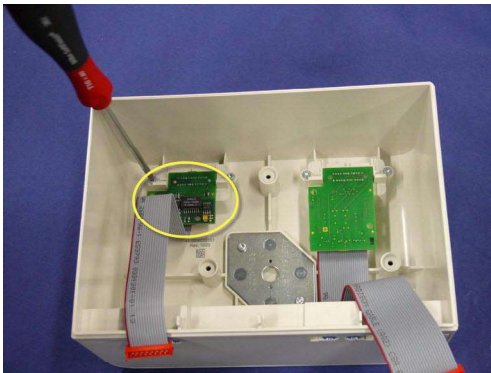
- 3 Push the MSL Holder forwards to remove it.



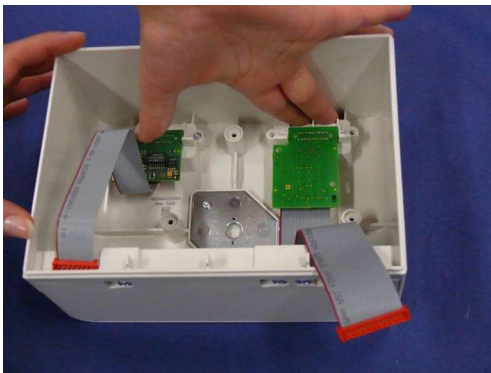
- 4 Push the MSL UP board forwards to remove it.



- 5 Remove the MSL DOWN board accordingly by performing the above steps for the other MSL board.

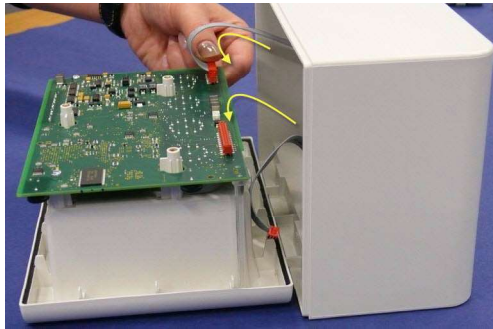


- 6 Reassemble the MSL boards by performing the above steps in reverse order. When reassembling, push down MSL holder before tightening screws.



Reassembling the Front and Back

Make sure the cables are inserted as shown below



4-Slot Flexible Module Rack (FMS-4) Disassembly (with MMS Mount)

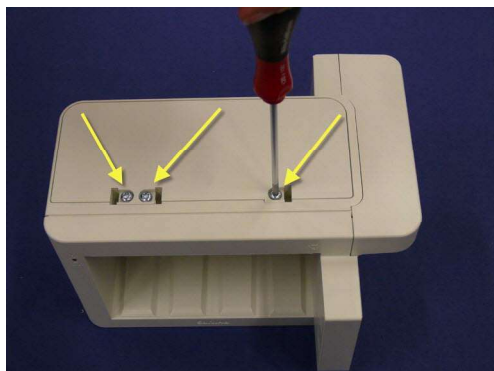
Removing the Universal Mounting Clamp

- 1 If the Universal Mounting Clamp is installed, remove the two screws (T20) from the Universal Mounting Clamp and remove the clamp. If any other mounting bracket is installed, remove it.



Removing the MSL DOWN board in MMS Mount

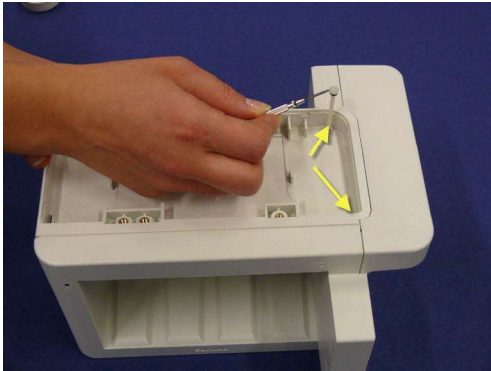
- 1 Remove the three screws (T20) from the bottom cover.



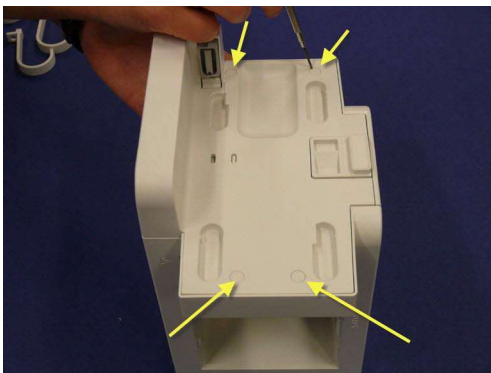
- 2 Remove the bottom cover. If cable management hooks are installed, remove them.



- 3 Remove the two pins as shown below.

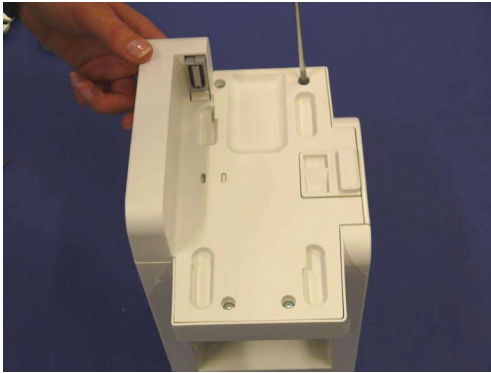


- 4 Position FMS with the MMS mount pointing upwards.
- 5 Remove the four silicone screw covers as shown below.

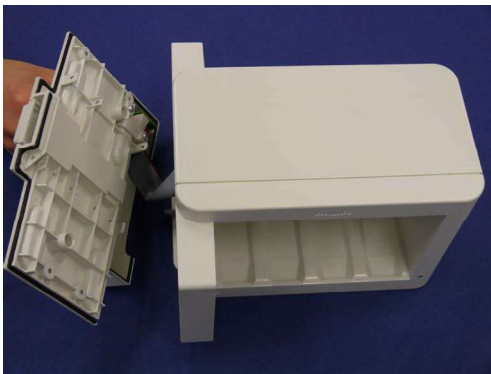


5 Repair and Disassembly

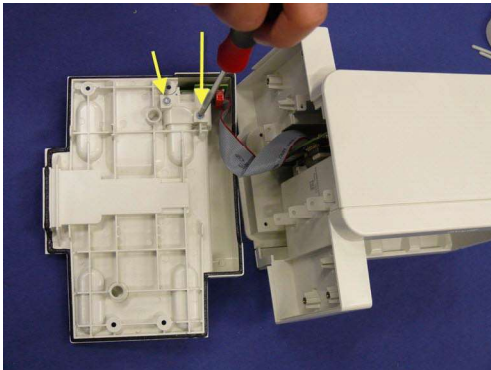
- 6 Remove the four screws (T10) from the MMS mount.



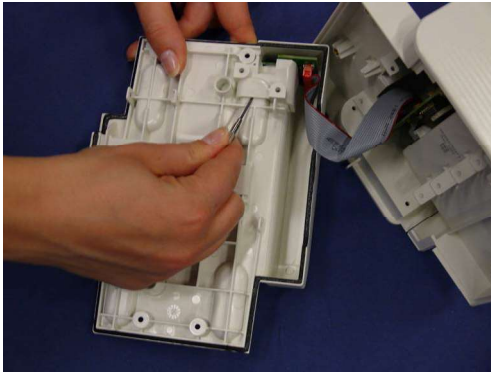
- 7 Flip FMS so it is positioned right side up.
- 8 Pull off the MMS mount.



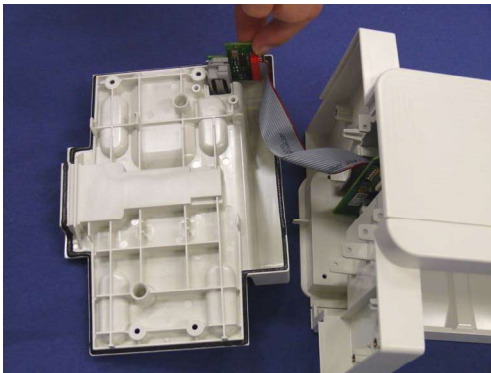
- 9 Remove the two screws (T10) from the MSL holder.



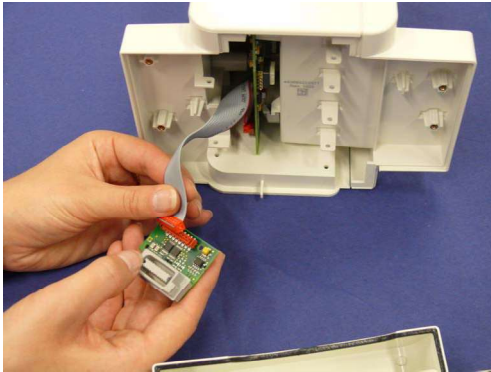
- 10 Remove MSL holder as shown below.



- 11 Remove the MSL Down board.



- 12 Remove the MSL cable from the board.



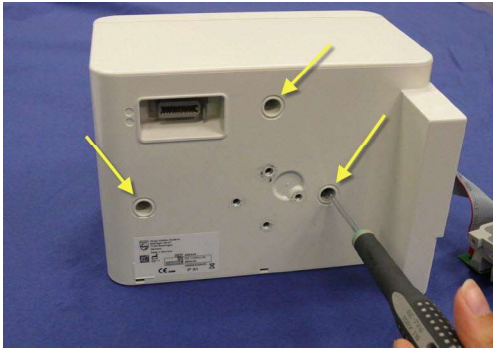
- 13 Reassemble the FMS by performing the above steps in reverse order. When reassembling insert the silicone screw covers with the holes pointing towards the bottom.

Separating the Front and Back of the 4-Slot FMS with MMS Mount

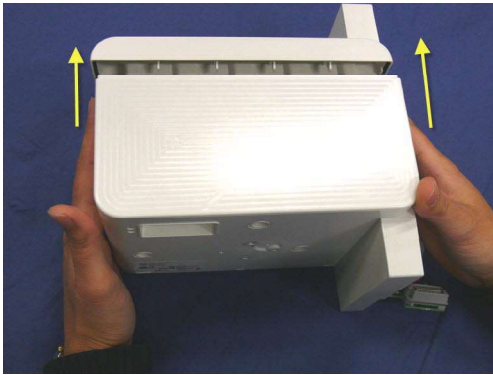
- 1 Remove the Universal Mounting Clamp or any other mounting bracket as described in [“Removing the Universal Mounting Clamp” on page 216](#).
- 2 Remove the MMS Mount as described in steps 1 to 11 of the section [“Removing the MSL DOWN board in MMS Mount” on page 216](#)

5 Repair and Disassembly

- 3 Remove the three screws (T10) from the back of the FMS.



- 4 Push the front housing off with your hands as shown below.



- 5 If you are exchanging the rear housing, check the information on the old housing label:
- Product Number (behind REF),
 - Serial Number (SN),
 - Service Number (If existent – Service#)
 - Date of Manufacturing (DOM; under the factory icon in the format YYYY-MM or old MM/YY) or, if on the existing label: Date of Refurbishment (DOR; under the factory icon in the format YYYY-MM, and additionally Date of Refurbishment transferred under the date).

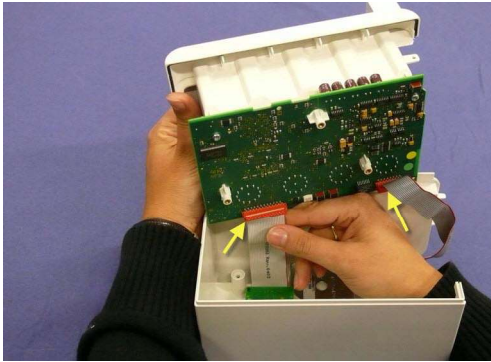
Locate the appropriate position on the new rear housing label.



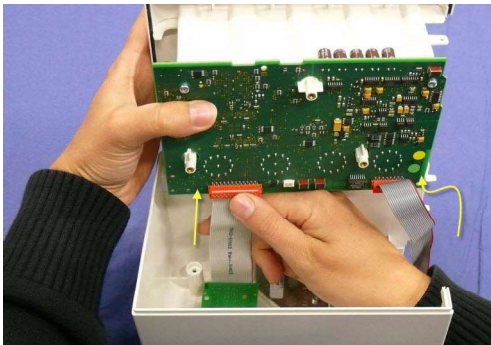
Copy all information onto the new Rear Housing label from the old Rear Housing Label using a water-resistant pen.

Paste the additional adhesive clear blank label on top of the updated replacement rear housing over REF, SN, Service#, and DOM to avoid smearing and provide protection.

- 6 Unplug the cables from the main board.



- 7 Reassemble the FMS by performing the above steps in reverse order. When reassembling the front and back of the FMS, make sure the cables are inserted into the main board as shown below.



Make sure that the screws in the rear cover are tight enough so that the FMS is properly sealed and that the silicone screw covers in the MMS mount are inserted with the hole facing downwards.

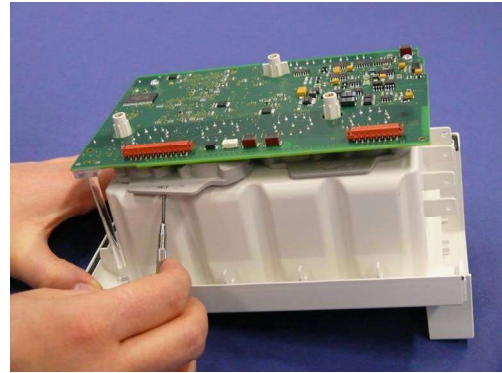
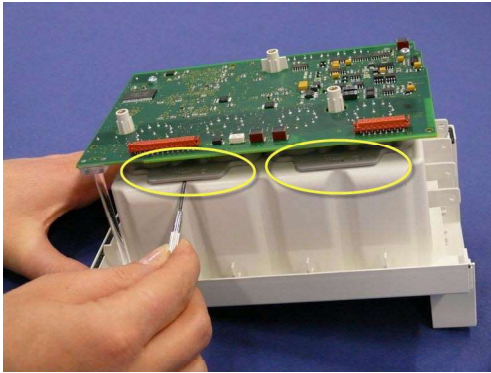
Removing the Main Board

- 1 Separate the front and back of the FMS-4 as described in [“Separating the Front and Back of the 4-Slot FMS with MMS Mount”](#) on page 219.
- 2 Remove the two screws (T10) from the main board.

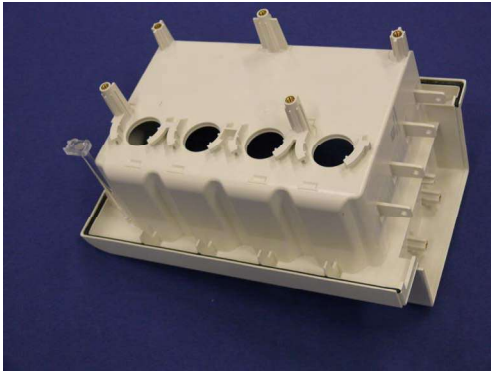


5 Repair and Disassembly

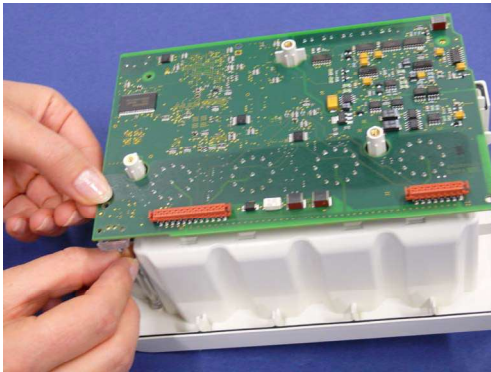
- 3 Pull out the two connector holders with a flathead screwdriver.



- 4 Remove the main board.

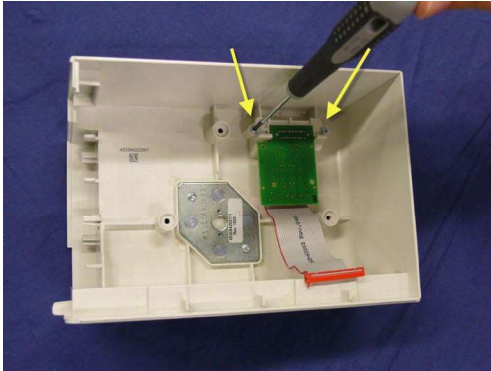


- 5 Reassemble the FMS by performing the above steps in reverse order. Make sure that the light guide is in its correct position (see picture below) and reinsert the connector holders by pushing them in until you hear a click..

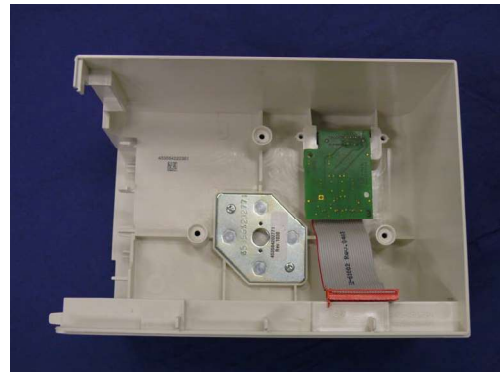
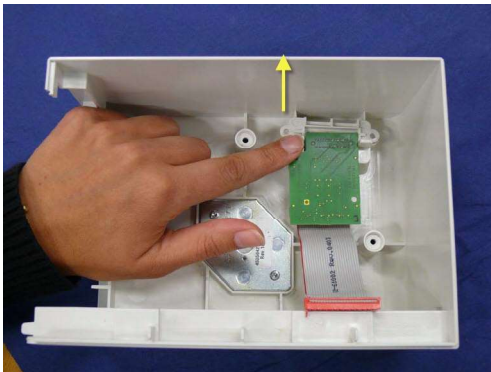


Removing the MSL UP Board

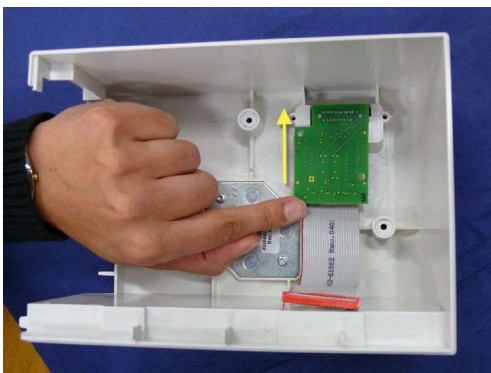
- 1 Separate the front and back of the FMS as described in “Separating the Front and Back of the 4-Slot FMS with MMS Mount” on page 219.
- 2 Remove the two screws from the MSL holder.



- 3 Push the MSL Holder forwards to remove it.



- 4 Push the MSL board forwards to remove it.



- 5 Reassemble the MSL UP board by performing the above steps in reverse order. When reassembling, push down MSL holder before tightening screws.