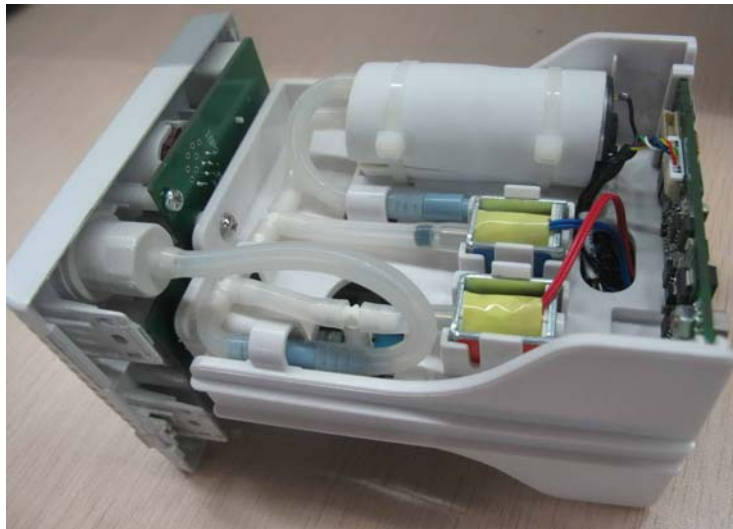
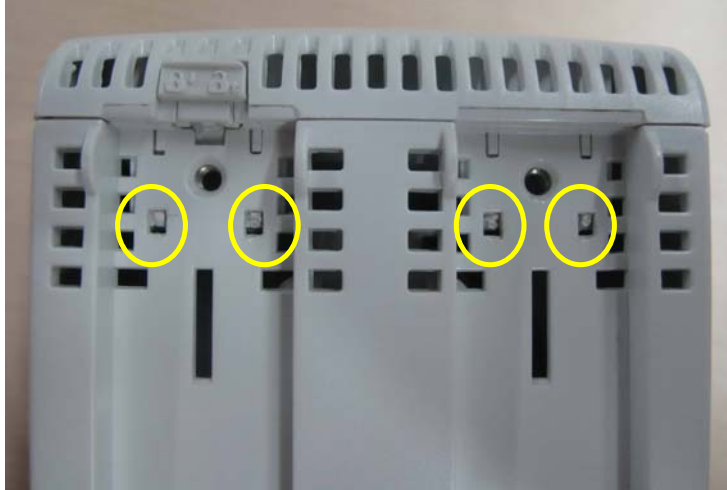


---

### 5.5.3 Disassembling the New MPM Module

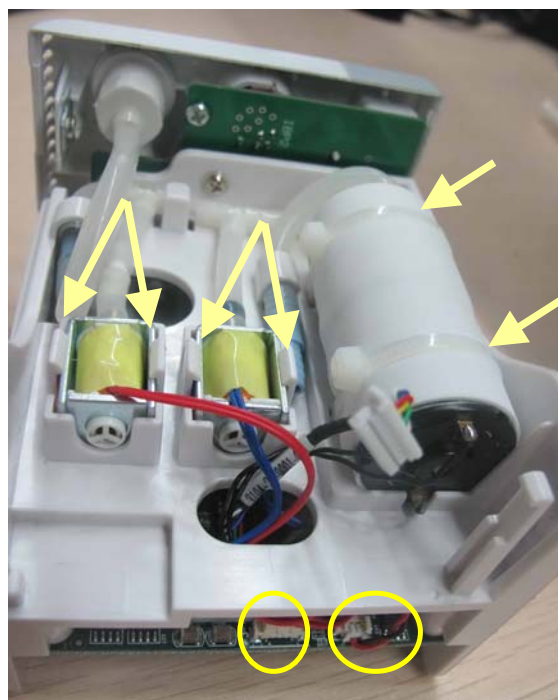
1. Remove the contact screws and the spanner by referring to steps 1 to 3 as described in *5.5.1 Disassembling the ICG Module*.
2. Unscrew the two M3×6 screws. Then press down, in turn, the four clips that engage the front cover with a small flat-bladed screwdriver. At the same time, pull off the rear cover.



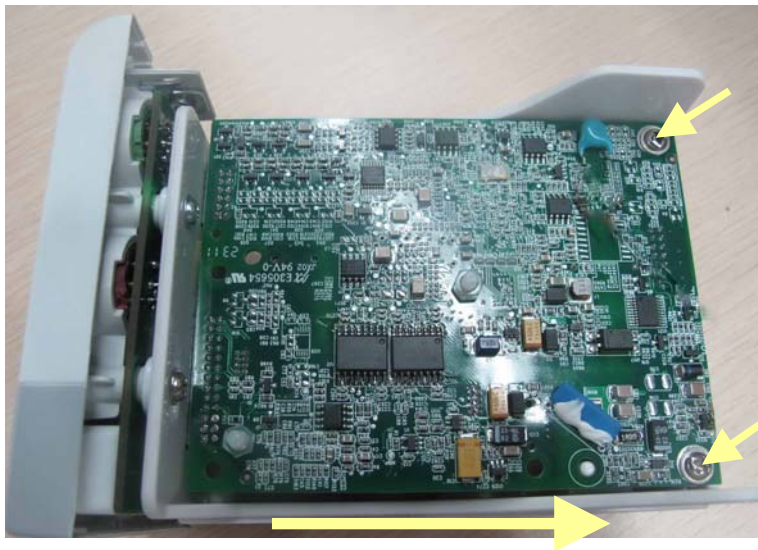
- 
3. Disconnect the cable of the infrared communication board, and release the snap lock to remove the infrared communication board.



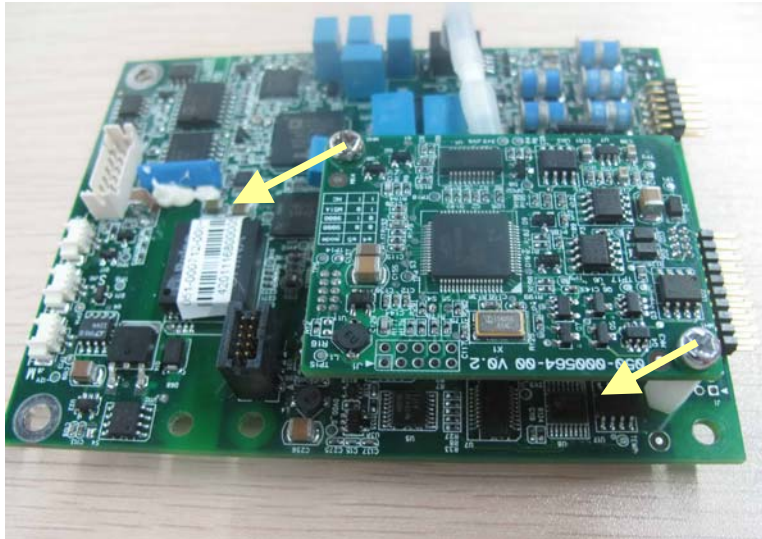
4. Disconnect the cables of the NIBP inflation pump and the relief valves from the parameter board. Snip off the cable ties to remove the pump. Release the snap locks to remove the valves.



- 
5. Unscrew the two M3×8 screws on the parameter board. Then pull off the parameter board rightward as shown below.



- 
6. Unscrew the two M3×4 screws on the SpO<sub>2</sub> board to separate the SpO<sub>2</sub> board and the parameter board.



7. Unscrew the three M3×8 screws to separate the front panel assembly and the holder.

