

Instructions for Use

VueLink/BIS Support Tool

Patient Monitoring

Part Number 4535 641 32841



PHILIPS

Table Of Contents

2 VueLink/BIS Support Tool - Using VueLink 3

VueLink/BIS web access	3
Hardware Setup	3
Installing the VueLink Support Tool Application	3
Launch the VueLink Support Tool Application	7
Options	9
Adding New Drivers Manually	10
Accessing the VueLink Module	10
Screen Layout and Design	13
Space Availability in a VueLink Module	17
Update/Modify Module Configurations	18
Updating Multiple Drivers	20
Deleting Drivers	23
Adding and Deleting Drivers Simultaneously	25
Cloning Configurations	25
Delete a Clone File	30
Accessing VueLink Additional Information	30
Adding New HTML Files Manually	32



VueLink/BIS Support Tool - Using VueLink

The VueLink/BIS Support Tool application allows users to access VueLink modules attached to Philips IntelliVue Patient Monitors. The Support Tool is used to:

- Access existing module configurations
- Modify module configurations
- Clone module configurations
- Store Cloned images

WARNING Do not run the VueLink Support Tool Application while a patient is connected to the respective monitor.

VueLink/BIS web access

The application is accessible from the Zeppelin intranet website and from the InCenter intranet website:

- <http://pww.zeppelin.philips.com/zeppelin/user/>
- <https://incenter.medical.philips.com>

If you have any problems accessing the website or any of the listed applications, please contact the Zeppelin support staff via email at zeppelin@philips.com.

The application installation package can also be found in Zeppelin Toolbox.

Please note that the VLBST 3.0 software package downloaded from Zeppelin Website or Zeppelin Toolbox or InCenter website will be a silent installation and no manual intervention is needed during installation.

Hardware Setup

With the VueLink application installed on your laptop and active, you must connect the IntelliVue Patient Monitor (or the CMS or V24/26) to an electrical outlet and powered on, and have the IntelliVue FMS (M8048A) attached to the monitor. Connect an RS232 cable to the Patient Monitor and to the serial port on the laptop.

Installing the VueLink Support Tool Application

Before installing VLBST 3.0, the older versions (VLBST 1.0, VLBST 2.0) if already installed on your PC should be uninstalled first.

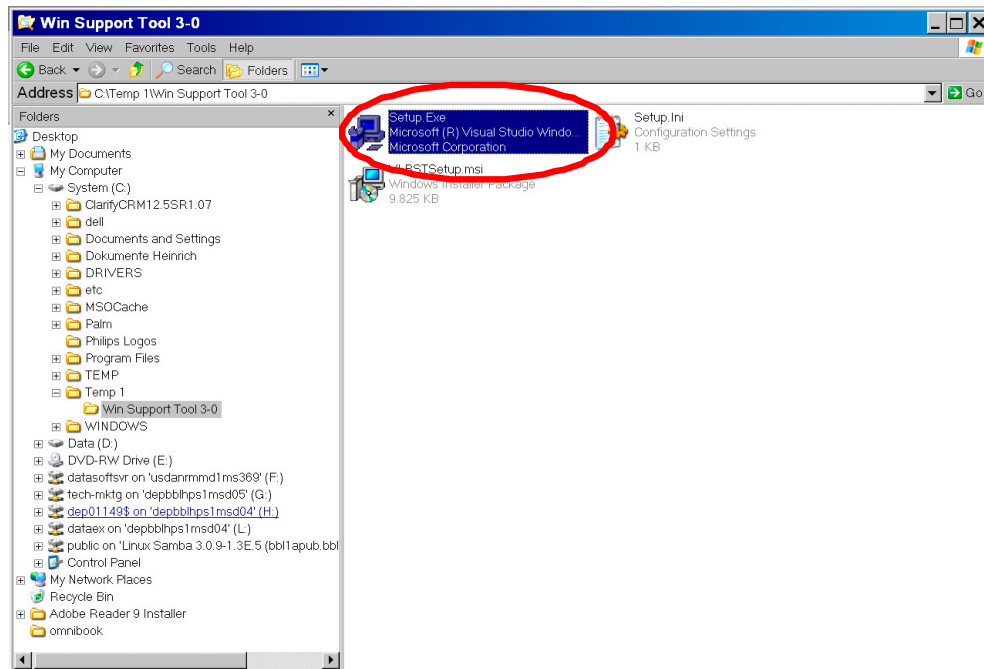
To achieve this, Go to Control Panel -> Add or remove Programs.

Select VLBST application and click on "Remove" button to start the un-installation.

The older version will be uninstalled. However, the "Clone" folder and the Clone files will remain at their current location, e.g. "C:\Program files\Philips\VLBST\Clone".

Perform the following steps to install the VueLink application on your laptop. It is assumed that you have first downloaded the application from one of the websites listed above and have the application stored on your laptop.

1. Access the VueLink application setup file folder (VLBST 3.0) from the temporary file folder location on you laptop. In this example, a Temp file located in the C:\Temp directory is the location.

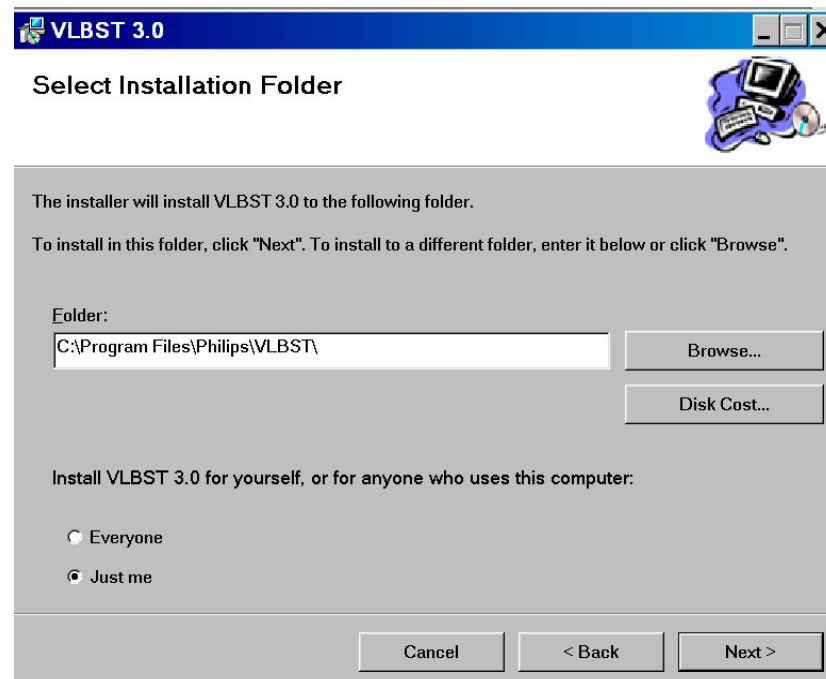


2. Select the Setup.exe executable.

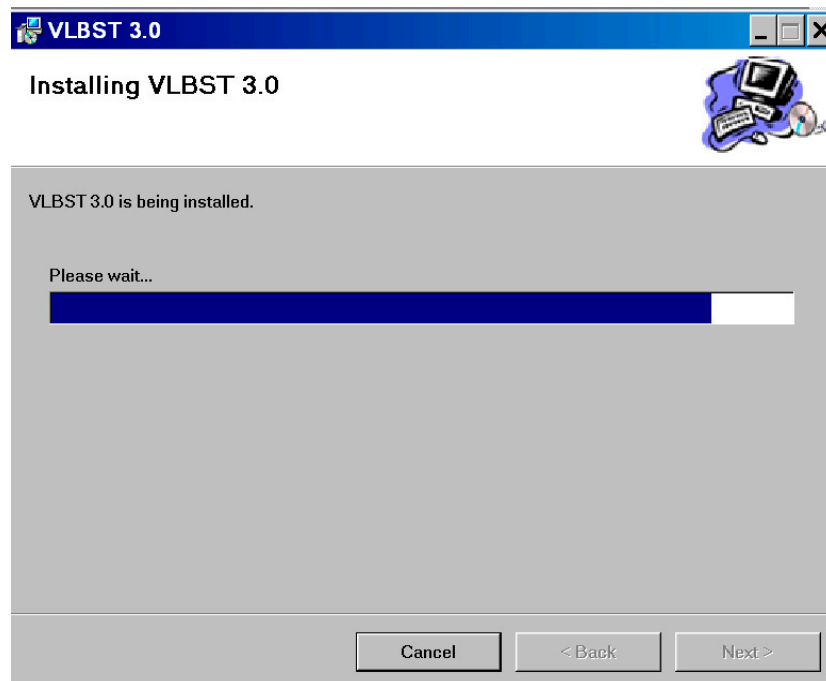
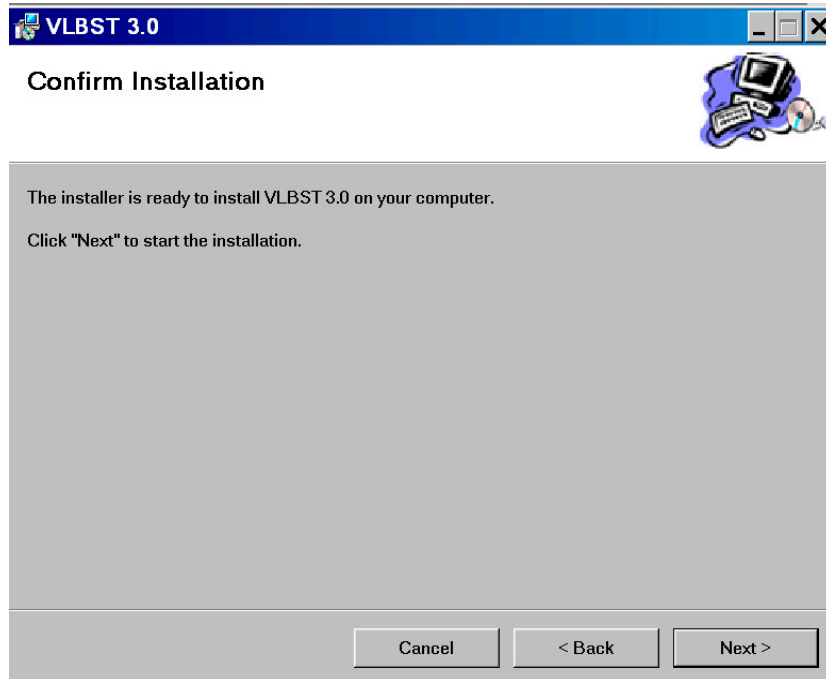
3. Click "Next" to continue. Follow all the screen prompts in the installation procedure.



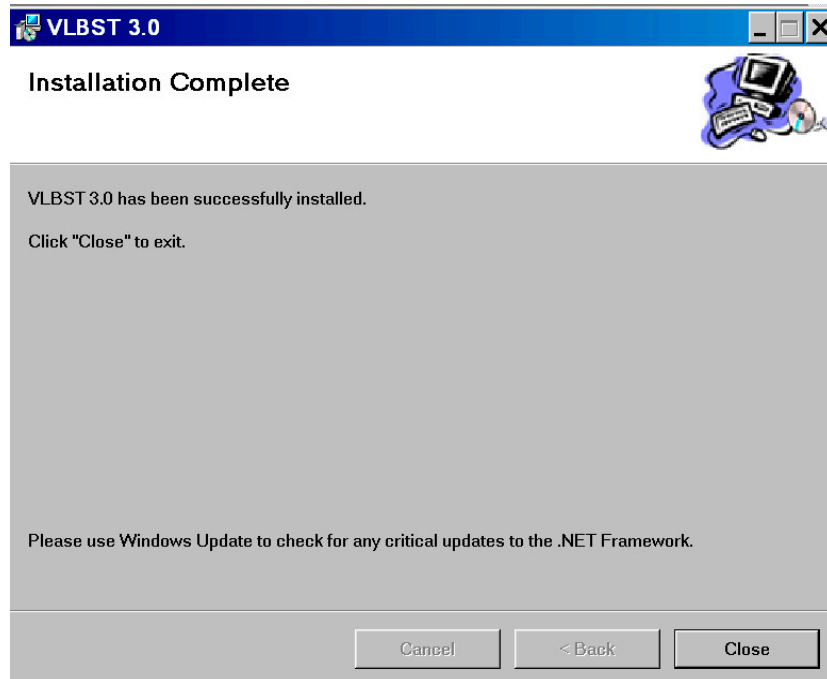
4. Select the default Installation folder location by clicking "Next".



- 5. Confirm the Installation procedure by clicking “Next”



6. Click Close to complete the installation.

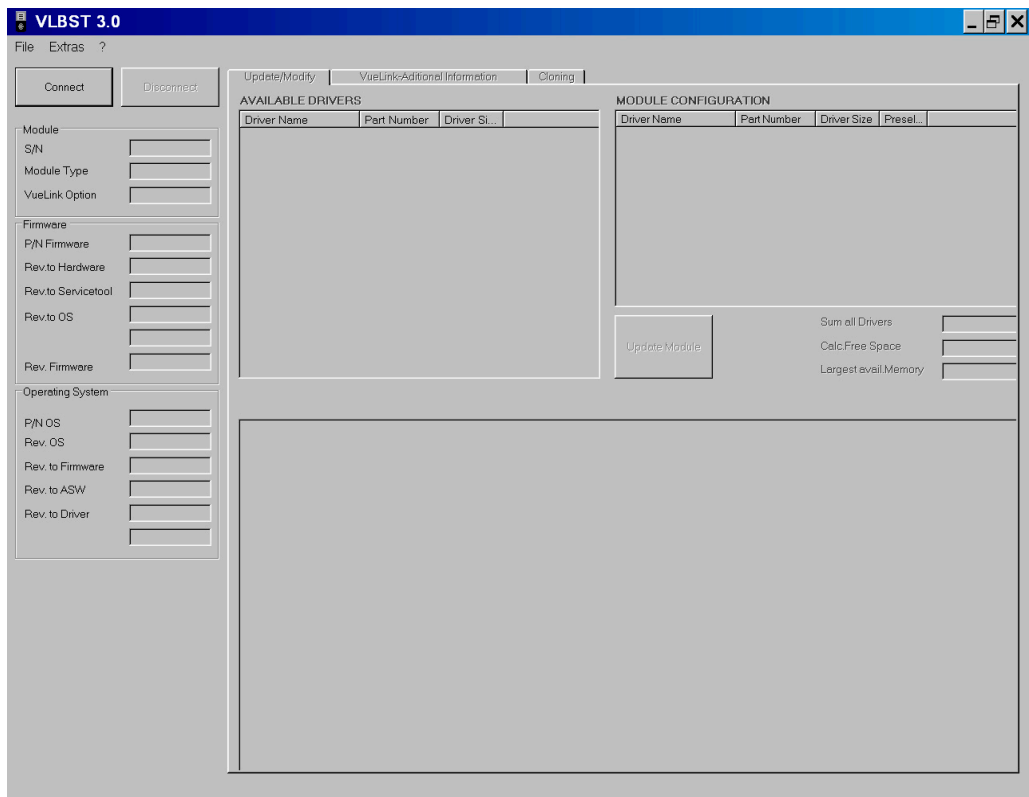


Launch the VueLink Support Tool Application

Once installed, the VueLink Support Tool application icon is placed on your desktop. Click on the icon to launch the application.

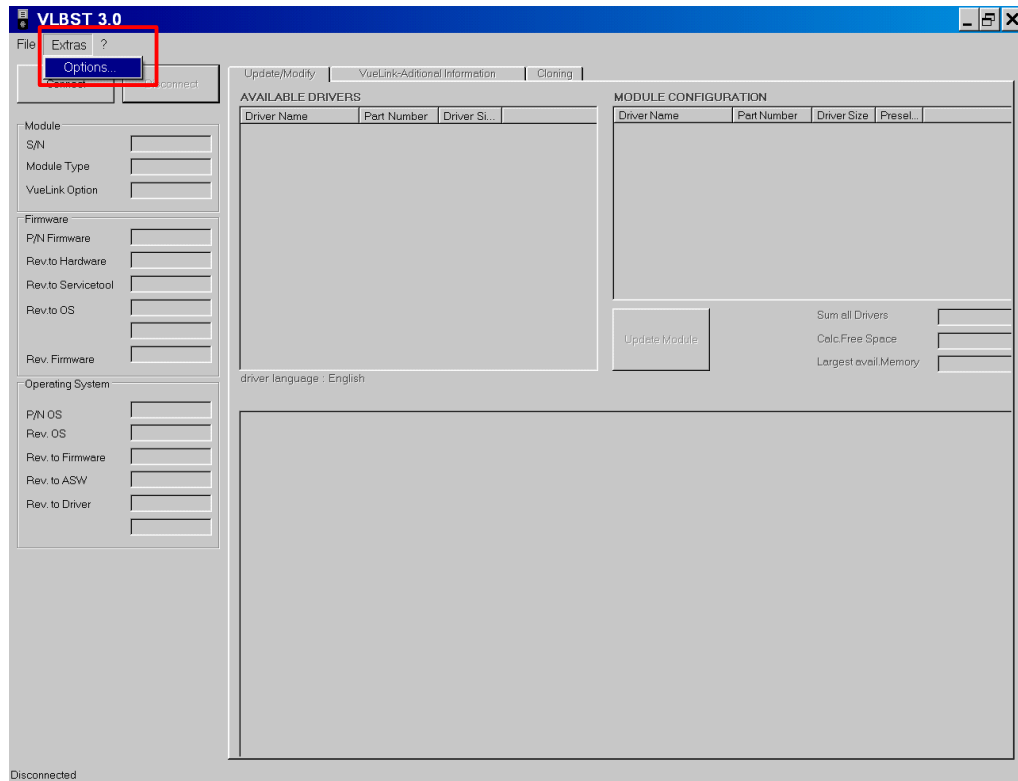


An empty VueLink application screen will display.

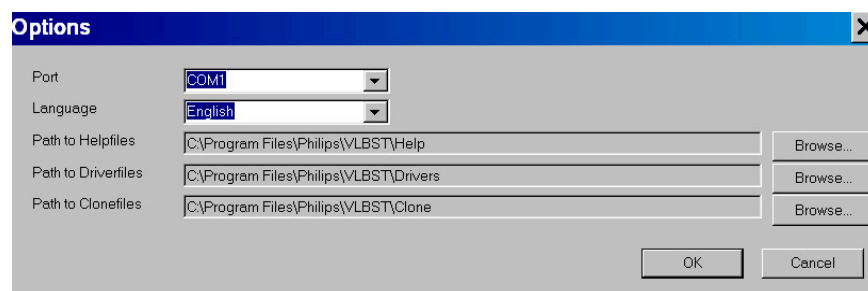


Options

In the Extra tab on the top Menu bar you can access the configuration window for the VueLink Support Tool application.



You can change the file pathnames if necessary. Select the Browse button to change the pathname. It is advised that you do not change the pathname of the Help file or the Driver file. These filename paths should remain static. The Clone file pathname is flexible and can be changed.



Adding New Drivers Manually

New or updated Driver and Help files Executables are periodically uploaded in InCenter website at location

Service > Software > Software Downloads > Patient Monitoring > Bedside Monitors > Modules / Clinical Measurements > M1032A - VueLink Parameter Module

E.g. click French - #A02, click Maquet SERVO-i, click "I agree" and save the file as it shows up, like "b55cf.exe"

To update the VLBST 3.0 tool with new/updated Drivers and Help files on your PC, download the Executable or Zip files from InCenter website to temporary location on your PC, extract them at Temporary location itself and then

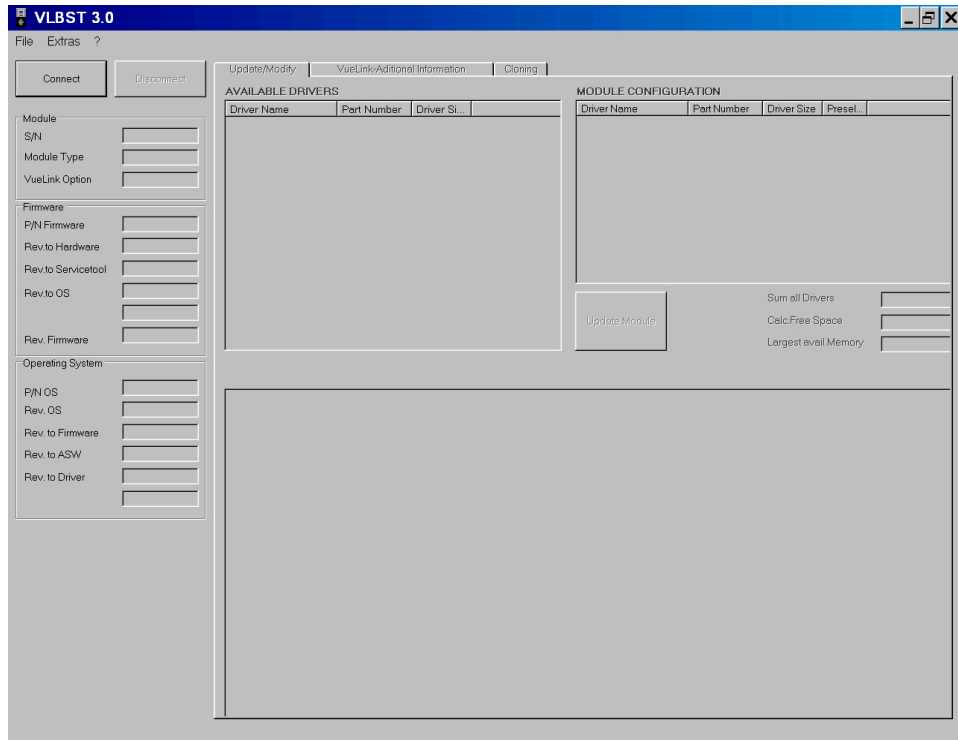
1. Copy the Driver files with .DRV extension from temporary location into "C:\Program files\Philips\VLBST\Drivers" on your PC.
2. Copy the Help files with .TXT extension from temporary location into "C:\Program files\Philips\VLBST\Help" on your PC.
3. Copy the HTML-files from folder "Additional Information" found on InCenter or SoftServer into "C:\Program files\Philips\VLBST\VueLinkHTML" on your PC. Delete the old files as these are no longer valid.

Accessing the VueLink Module

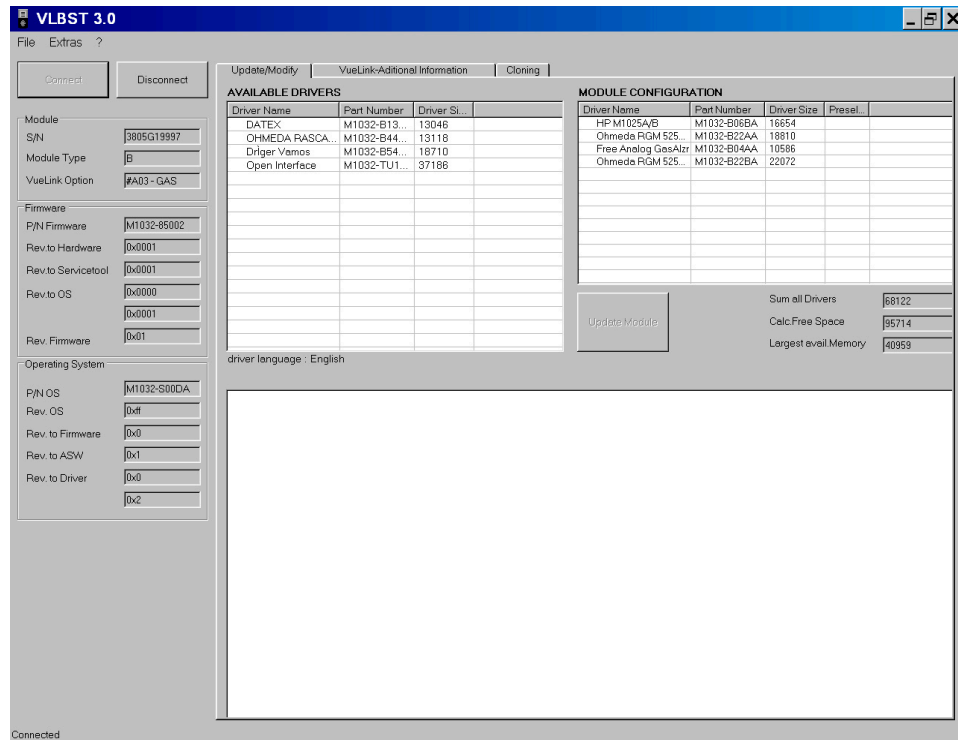
You will need to activate a VueLink module to access its configuration information. Perform the following steps to activate a module:

1. Unplug the VueLink Module from the FMS or the integrated module slot.
2. Press and hold down the VueLink button on the bottom front of the module.
3. Reconnect the module to the FMS or the integrated module slot.

4. When the lights on the front of the module blink in an alternating pattern, release the VueLink button. The VueLink module is ready to be accessed.



The above figure displays the VueLink application without an accessed module. With a module accessed, press the "Connect" button.

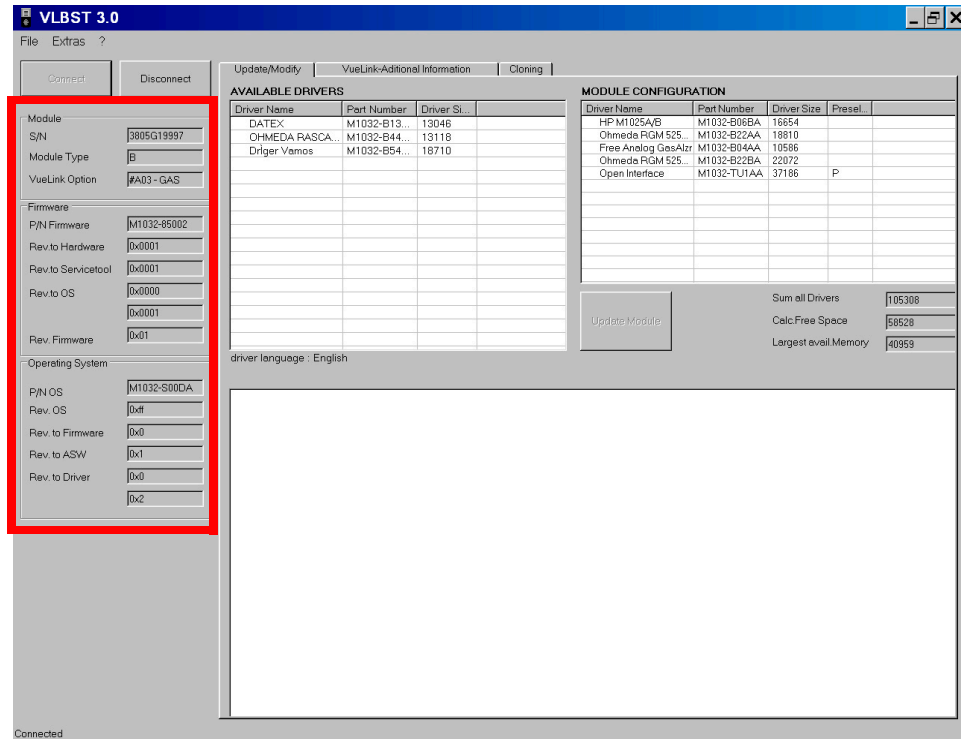


The above figure is indicative of the results, which display when a VueLink module is accessed with the application. Note that the display indicates the module has 6 active drivers installed with several available drivers that can be added to change the configuration.

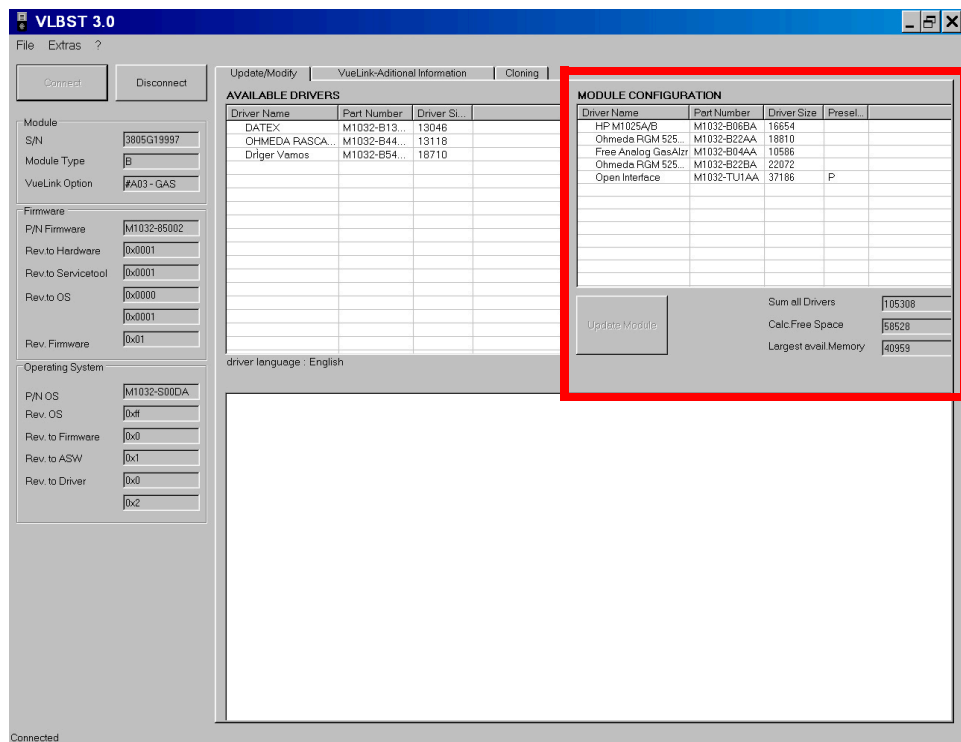
The Available Drivers window shows all drivers possible to be added to the module. The driver language is listed below the Available Drivers window.

Screen Layout and Design

The following screen display shows the VLBST application design and layout. The Cloning screen will be described later in this User Guide.

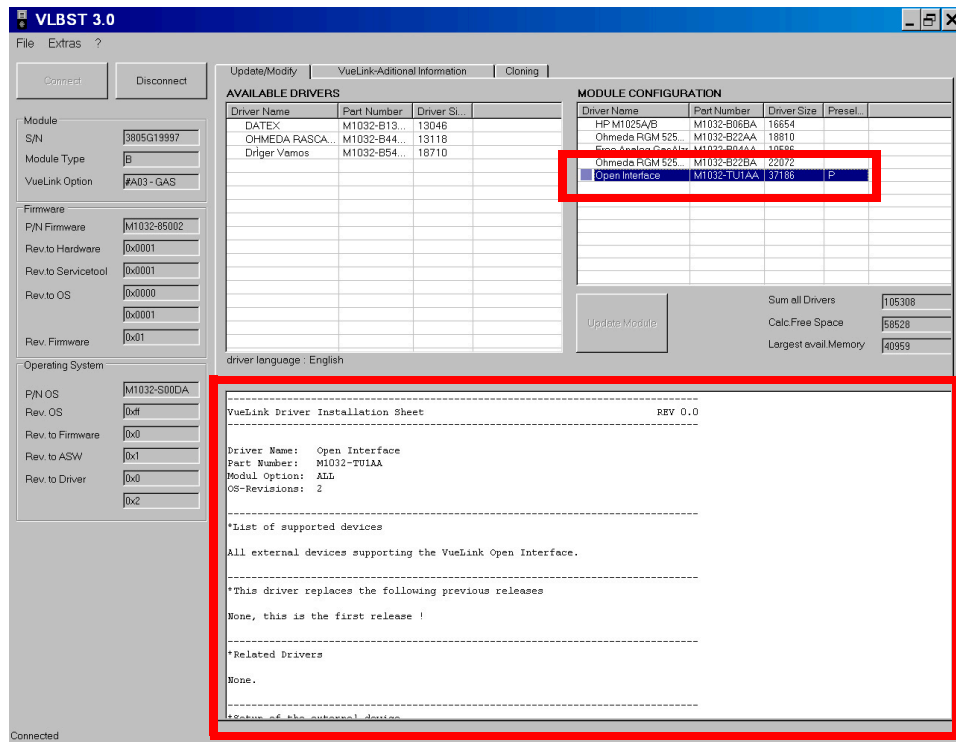


The left most panel of the screen displays information for the accessed VueLink Module including hardware, firmware and operating system information.



The Module Configuration panel indicates the drivers loaded on the accessed VueLink Module.

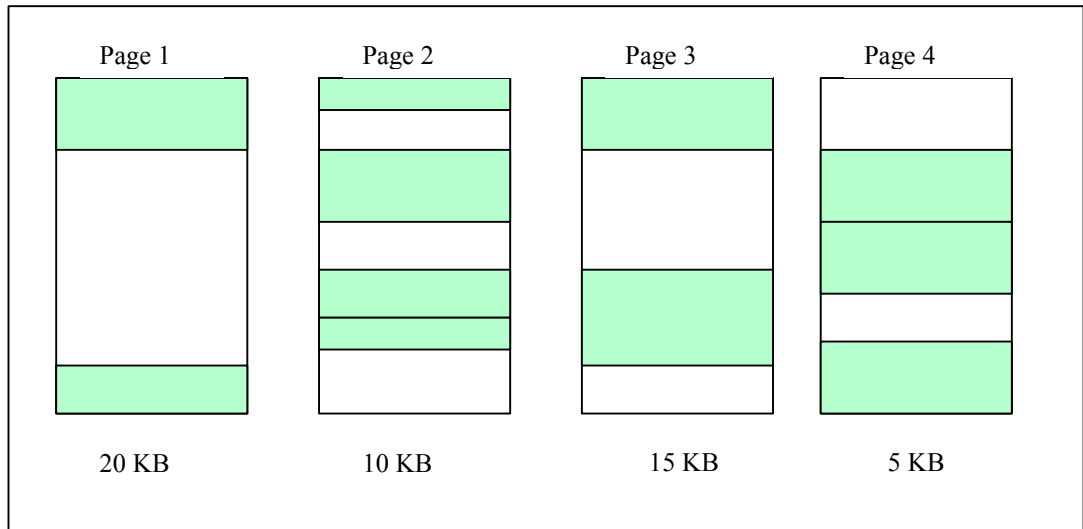
Your VueLink module is supplied with a number of device drivers available in Configuration Mode. The device drivers marked with P and S are preselected and selected device drivers available for use in Monitoring Mode. These drivers are then preselected and selected for monitoring.



The Help panel describes the highlighted driver and displays relevant information about the driver and the external device(s)

Space Availability in a VueLink Module

Prior to discussing the steps involved in reconfiguring modules, you need to understand the availability of memory space within a module. A couple of constraints exist in the configuration process. Within the module, there are four pages (except the A01 module, there are only 2 pages) of memory space on which drivers are stored.

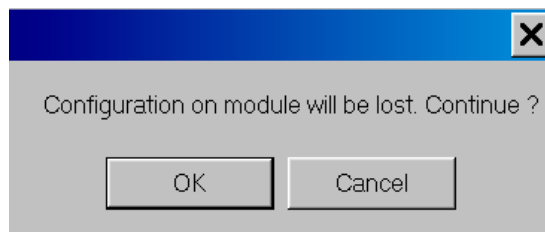
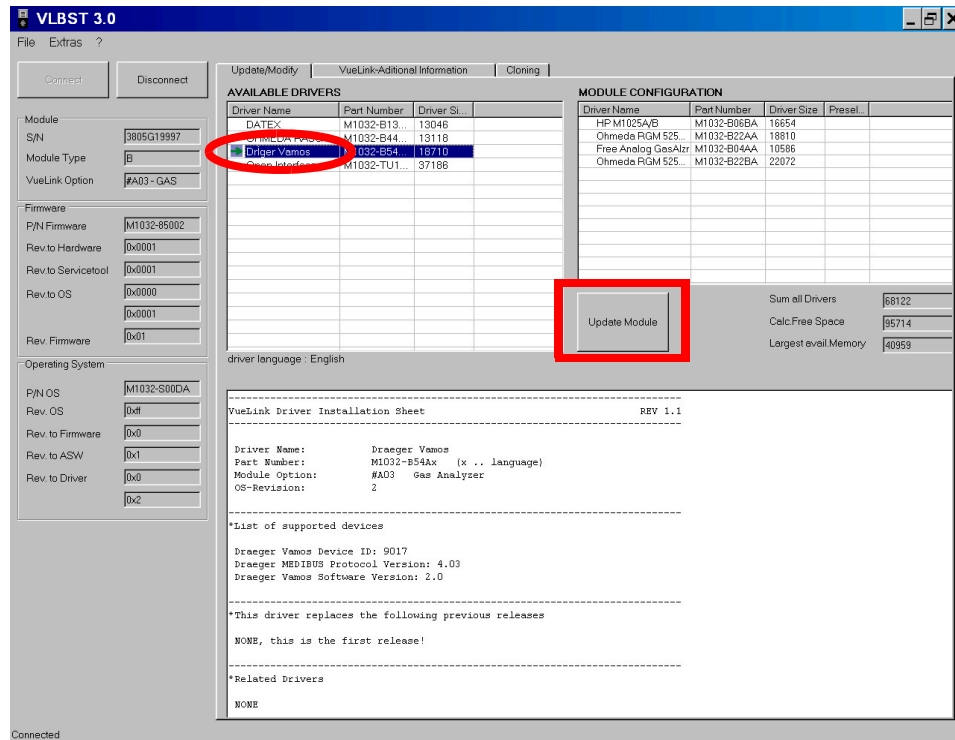


The white portion of the page in the above example shows the available space on each page. When adding drivers to a module, a driver must completely fit in the available space within a page to be added. For example, if a driver's size exceeded 20KB, it would not be able to be added to any page on the module and a module update would fail. If the driver size is 6KB, it could be added to any of pages 1-3 provided the available space is larger than 6KB. Adding a 6KB size driver to page 4 would conceivably fail because the available size of space is 5KB.

When adding multiple drivers in one update, the drivers are selected in a top down hierarchy. The first marked driver in the Available Driver window will be the first one added.

Update/Modify Module Configurations

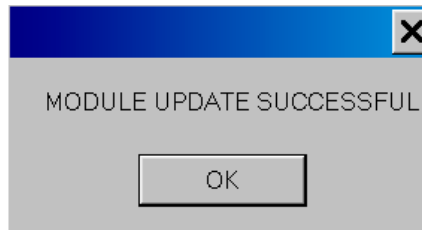
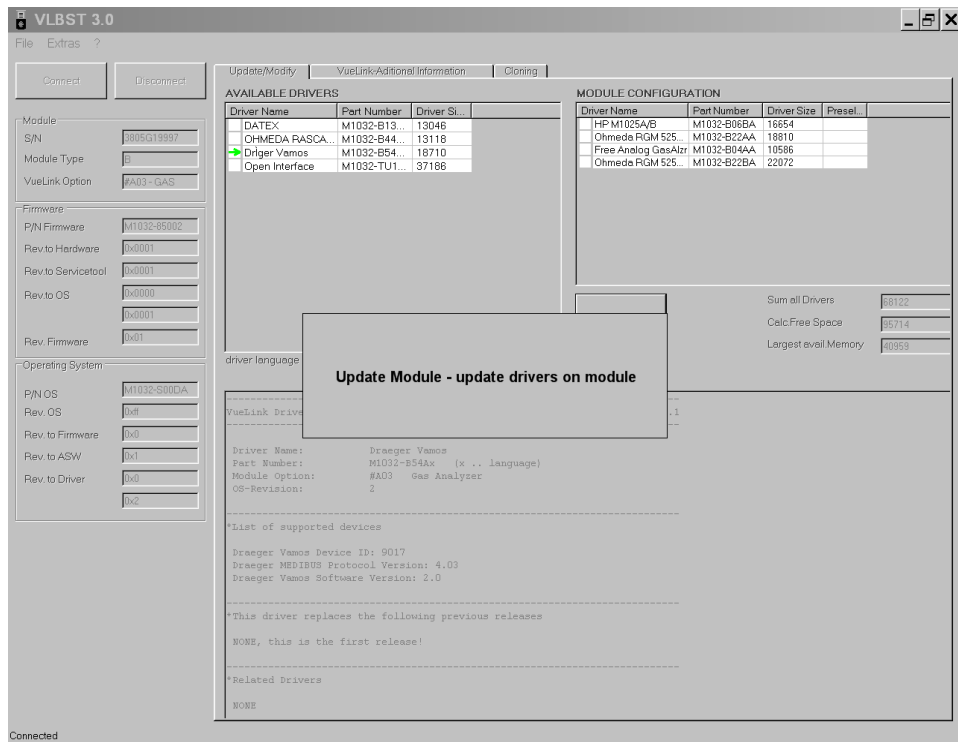
Use the Update/Modify Tab to change a module configuration. Highlight the driver(s), which you want to add to the configuration. You can add more than one driver at a time. If adding two or more drivers and the combined Driver Size does exceed the "Largest avail. Memory" size, the Update Module button will be disabled..



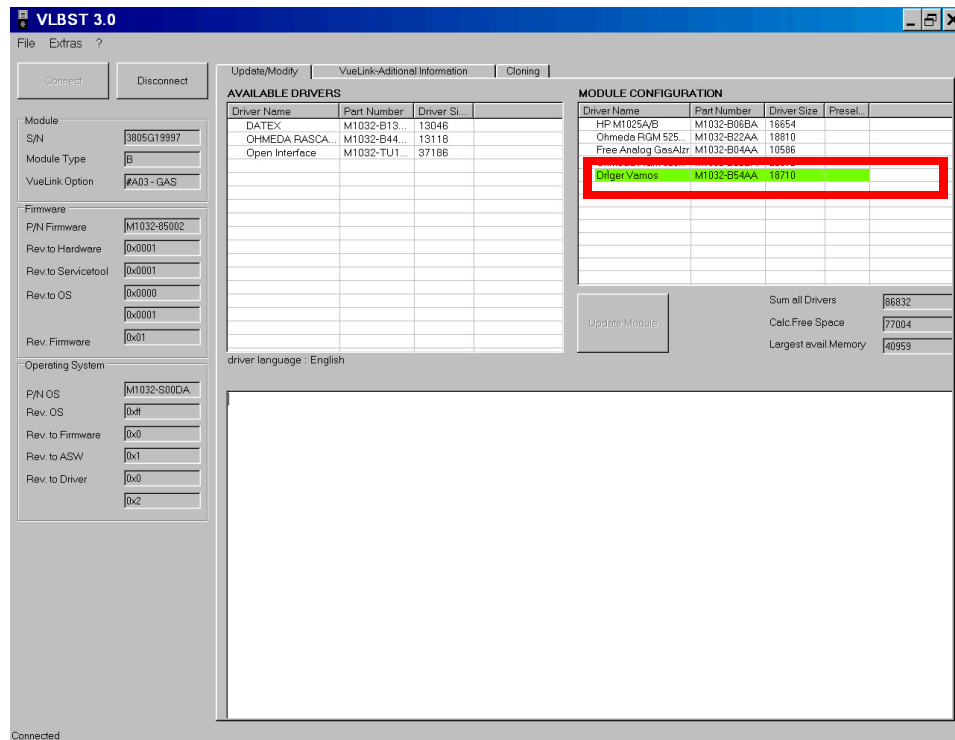
Click on the driver you want to add to the module. The green arrow marks the selected driver. Press the "Update Module" button and click "OK" on the message in the pop-up window "Configuration on module will be lost. Continue?" to add the driver to the Module. When you update the module all the configuration information on the module will be lost, e.g. preselected, selected drivers.

When adding a driver, keep the following in mind:

- The added driver should not exceed the "Largest Avail. Memory".
- The driver has to fit completely on the module page to be successfully added. (New VueLink modules have 4 memory pages - old VueLink modules contain only 2 memory pages.)



"Module Update Successful" message appears in pop-up window. Click on "OK" to go to Main screen.



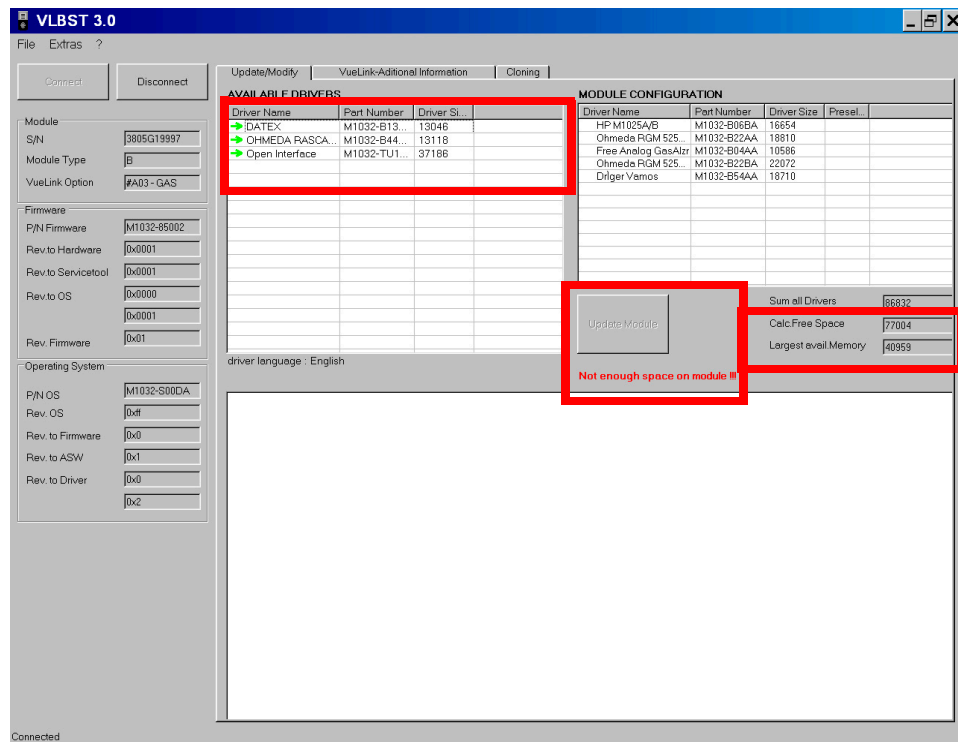
As the figure indicates, the green highlighted driver is added to the Module configuration.

Updating Multiple Drivers

When updating module configurations by adding multiple drivers in one update, there are a few constraints to consider:

- Multiple drivers will be added in a top-down hierarchy.
- If the combined Driver Size exceeds the Free Calculated Space, the "Update Module" button will be automatically disabled and greyed out. The message "Not enough space on module!!!" will appear in red below the "Update Module" button and you will not be able to add drivers.
- The largest driver should not exceed the largest available memory size.
- The drivers have to fit completely on the module pages to be successfully added. (New VueLink modules have 4 memory pages - old VueLink modules contain only 2 memory pages.).

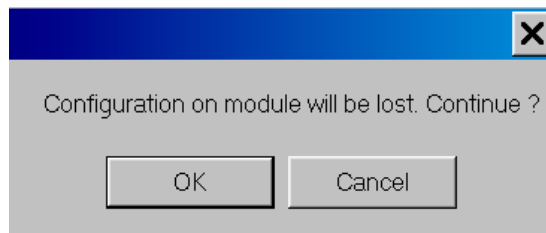
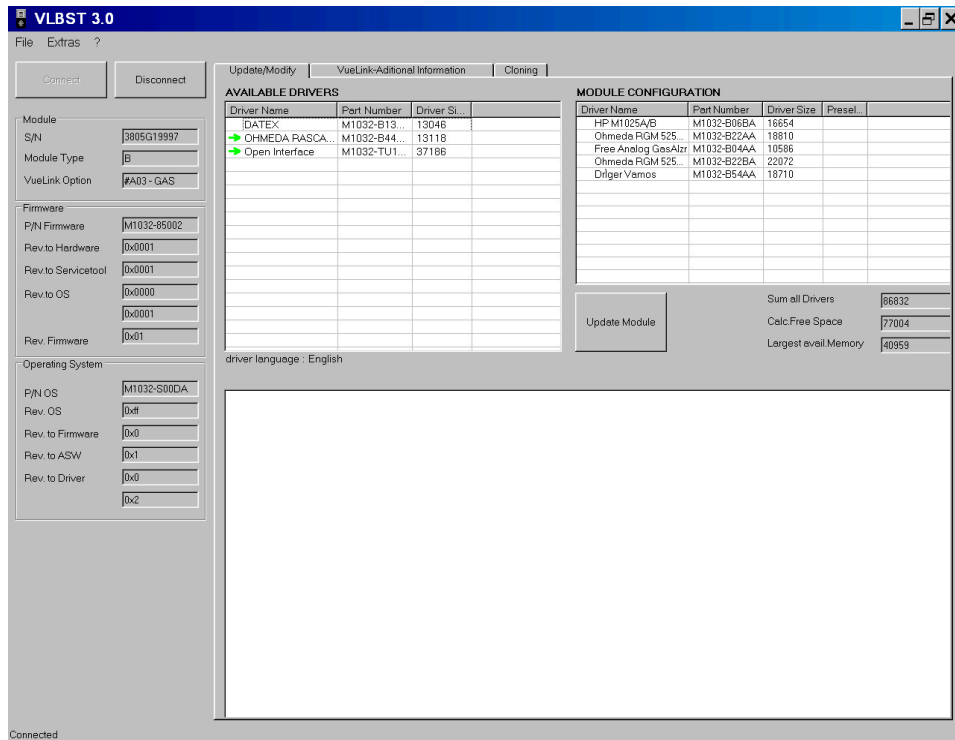
In the following example, three drivers are selected for addition to the Module configuration.



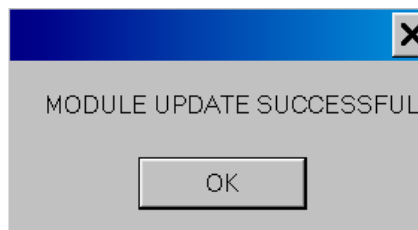
The combined Driver size ($34452 + 33002 + 32028 = 99482$) exceeds the "Calc. Free Space" (94498) hence the "Update Module" button is disabled and greyed out, and the message appears "Not enough space on module!!!"

It might be that the combined Driver Size of all drivers fit to Calc. Free Space. However, one of the drivers exceeds the "Largest avail. Memory". Hence the "Update Module" button is disabled and greyed out, and the message appears "Not enough space on module!!!"

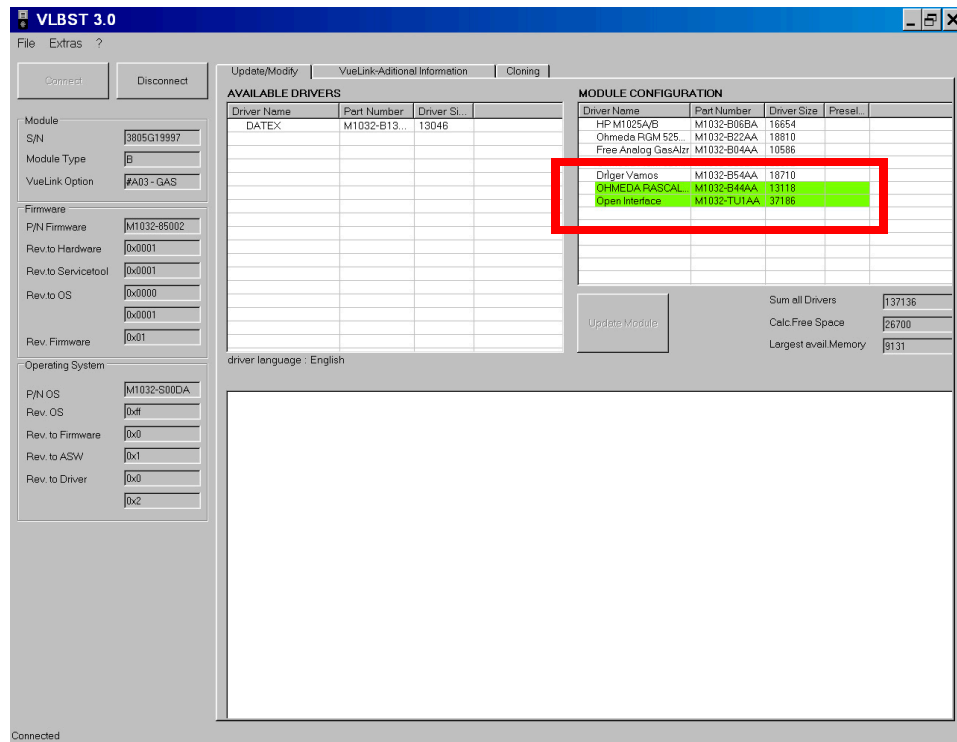
In the next example, the combined Driver size does not exceed any limit, the "Update Module" button is enabled and multiple drivers can be added as shown below.



Green arrows mark the selected drivers. Press the "Update Module" button and click "OK" on the pop-up window.



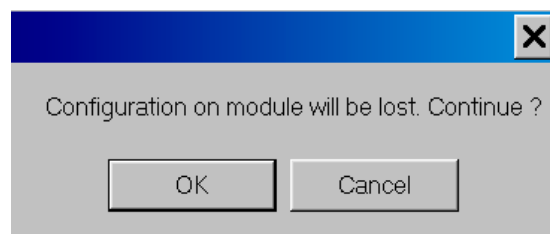
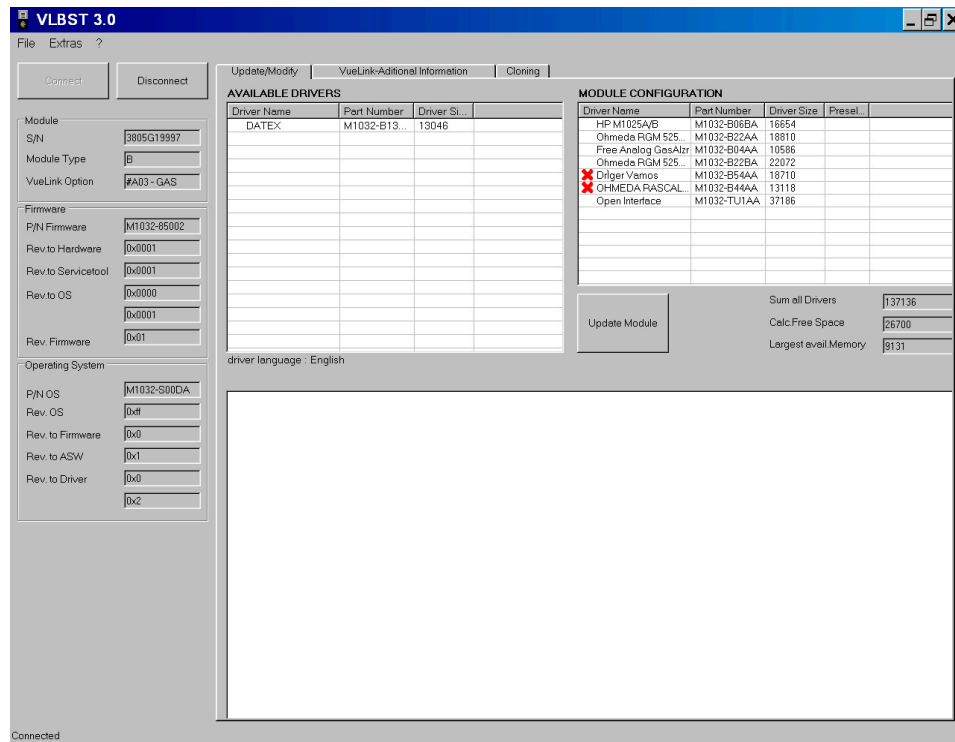
"Module Update Successful" message appears in pop-up window. Click on "OK" to go to Main screen. The drivers are successfully added to the Module configuration. They appear in "Module Configuration" panel and are highlighted in green.



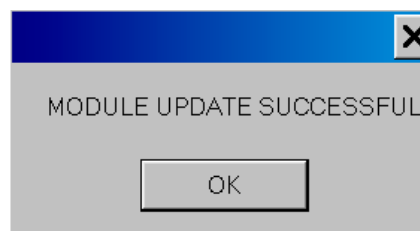
Deleting Drivers

When deleting drivers from a module configuration, the process can take longer than an addition to complete. In a deletion, the complete module configuration data is copied to a temporary cache buffer. The selected driver is then deleted from the buffer and the remaining drivers are then recopied to their location in the module. Therefore, the process can take more time to complete than adding a driver to a module.

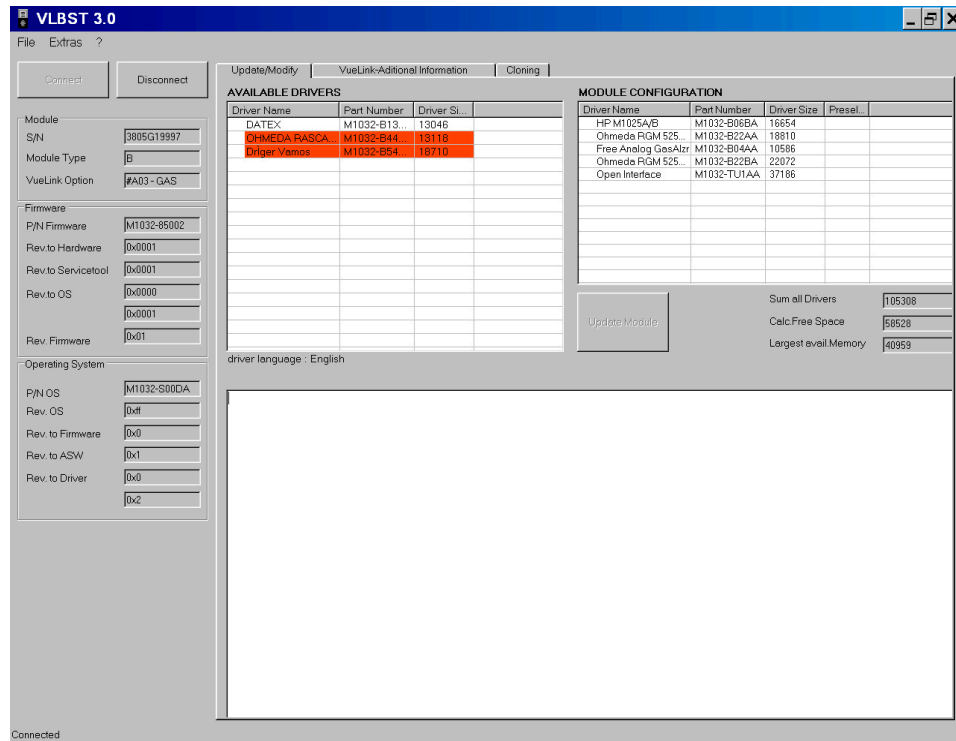
To delete a driver from the module configuration, simply select the driver(s) you want to remove and press the "Update Module" button. The red X indicates the selected driver(s).



Click "OK" on the pop-up window to delete the driver(s) from the module.



"Module Update Successful" message appears in pop-up window. Click "OK" to go to Main screen. The drivers are successfully deleted from the Module configuration. They are highlighted in red in "Available Drivers" window.



NOTE When deleting drivers, you are not constrained by the "Largest avail. Memory" or "Calc. Free Space" limits.

Adding and Deleting Drivers Simultaneously

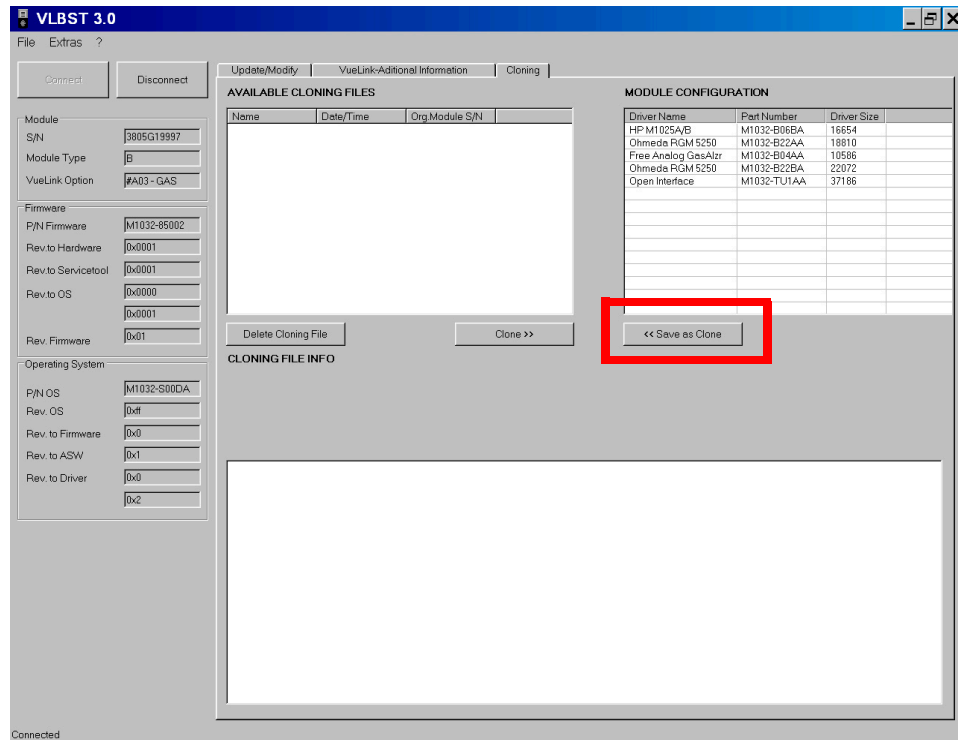
When performing a dual operation of adding and deleting drivers, the operation will be always successful as long as the "Not enough space on module!!!" doesn't appear. If the message appears, you must remove one or multiple selected drivers from the "Available Drivers" list. Or you delete more driver(s) in the "Module Configuration" panel until the message disappears.

Cloning Configurations

Saving Configuration in a Clone File

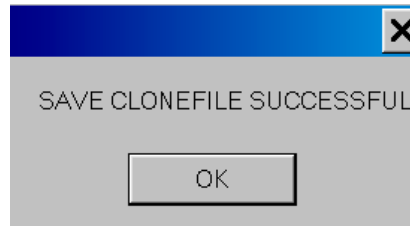
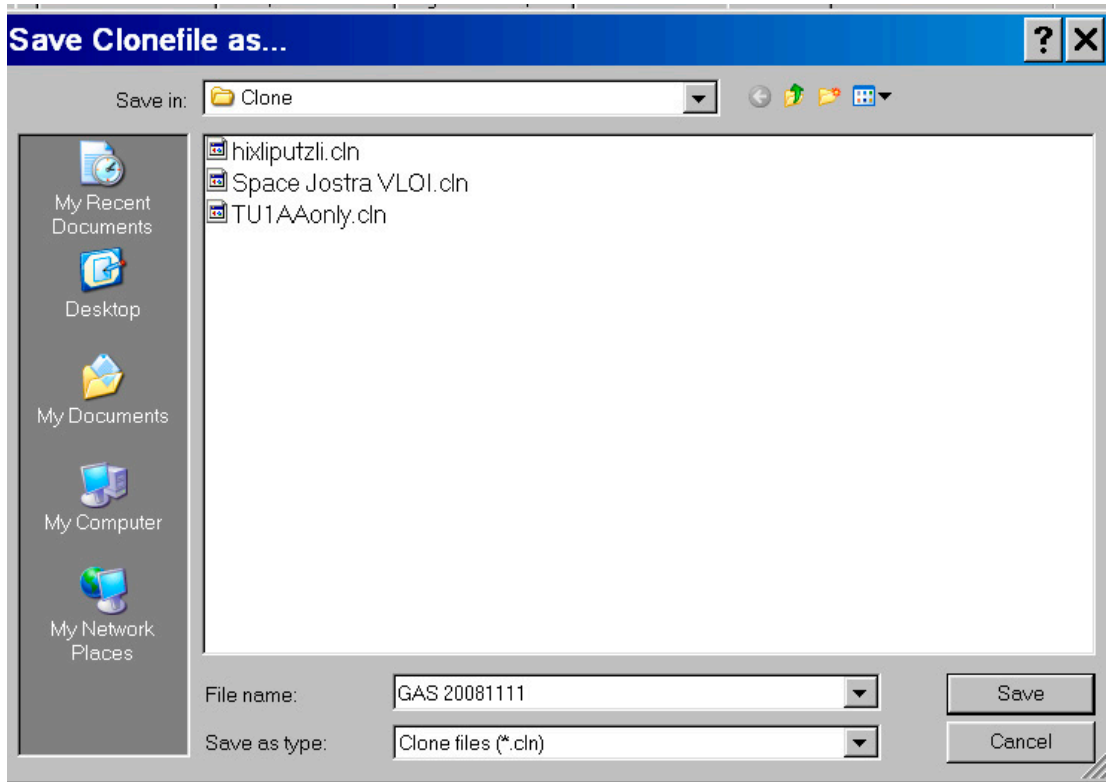
Use the "Cloning" Tab and the "Save as Clone" button to save a configuration in a clone file. Cloning is helpful when the same configuration needs to be applied to multiple VueLink modules.

Clone(s) should be saved within the folder selected in the Extra/Options utility. If the clone file is not stored to this folder, it will be saved, but will not display in the "Available Cloning File" list.

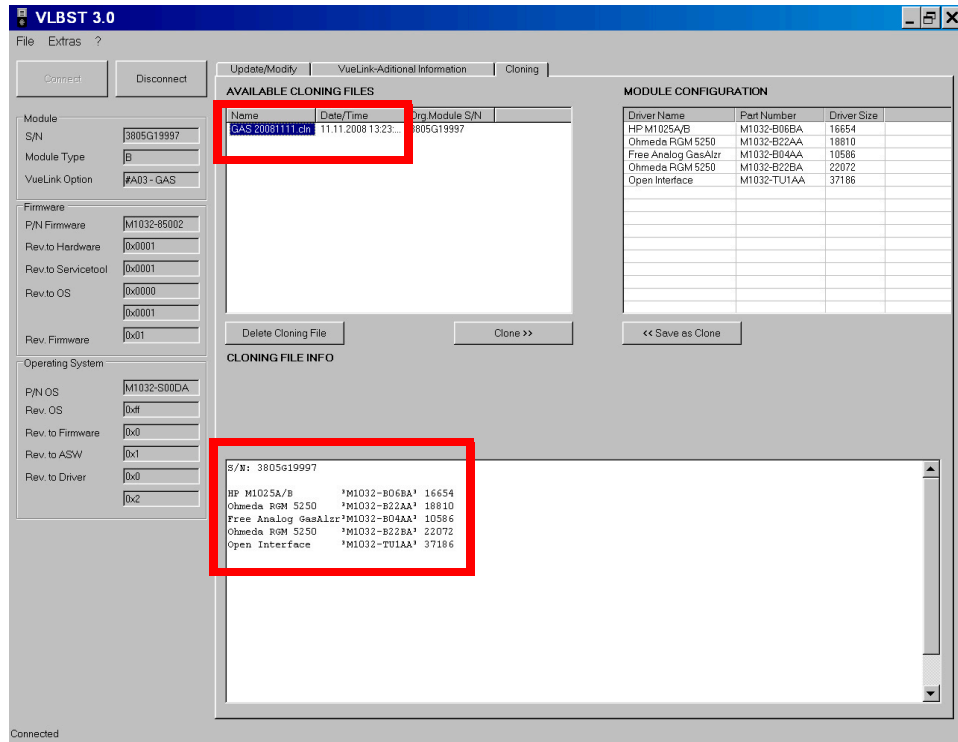


Click the "Save as Clone" button to make a clone out of a configuration.

Enter a name for the cloned configuration.

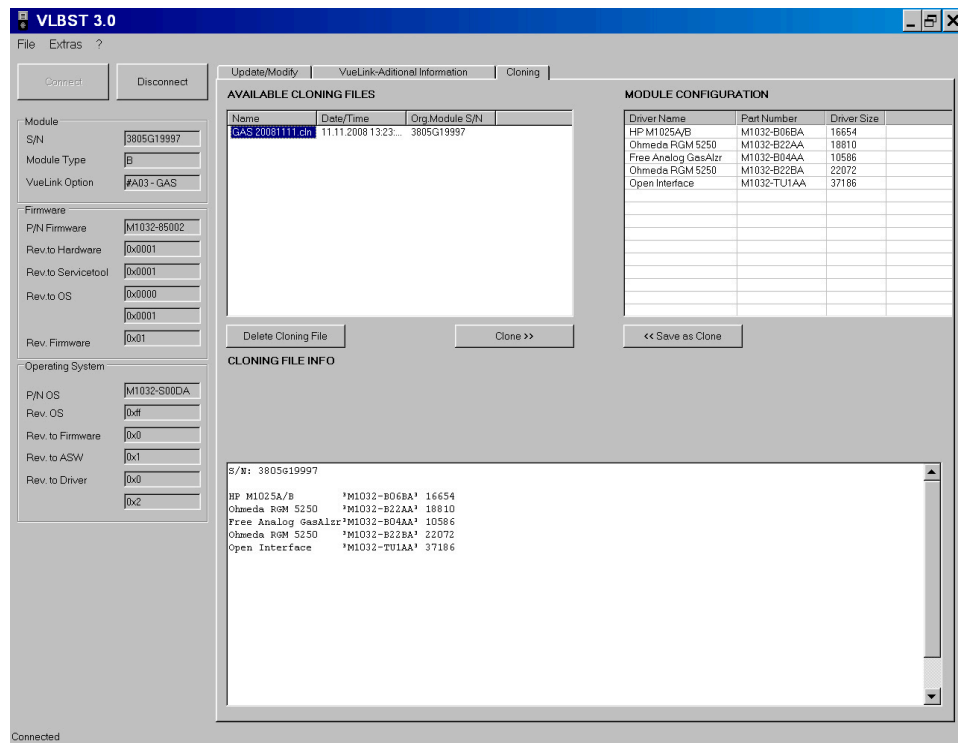


The cloned configuration is saved, and the driver information is listed in the display.



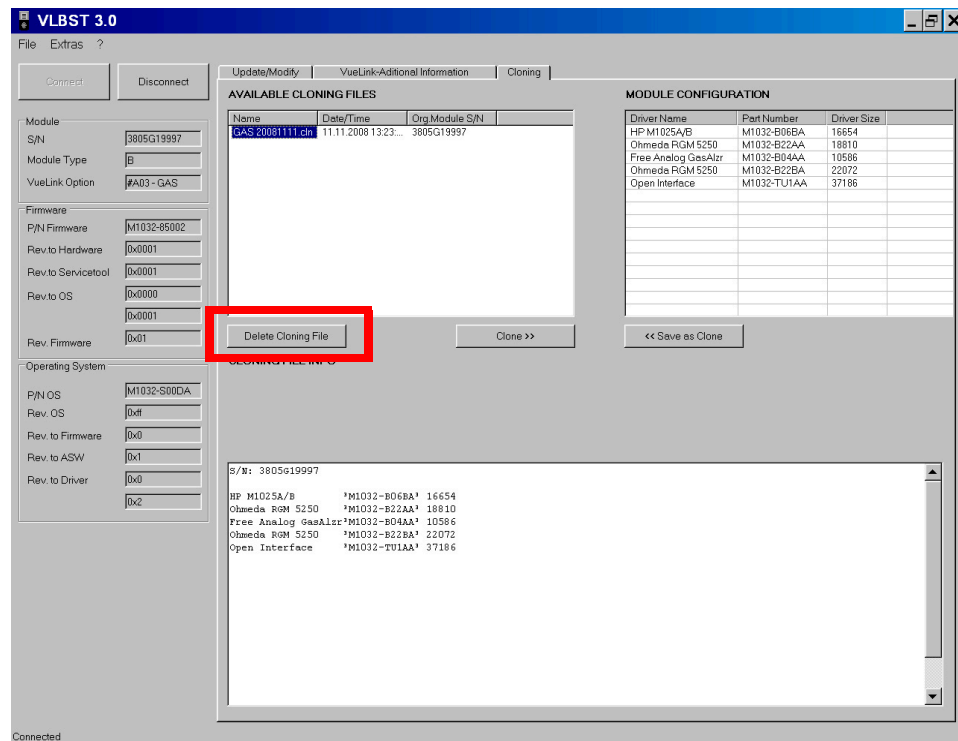
Clone Module

Select a clone file. Use the "Clone" button to clone this driver configuration to the module from the selected clone file.



Delete a Clone File

When deleting a Clone File, select the file for deletion and click the “Delete Cloning File” button.

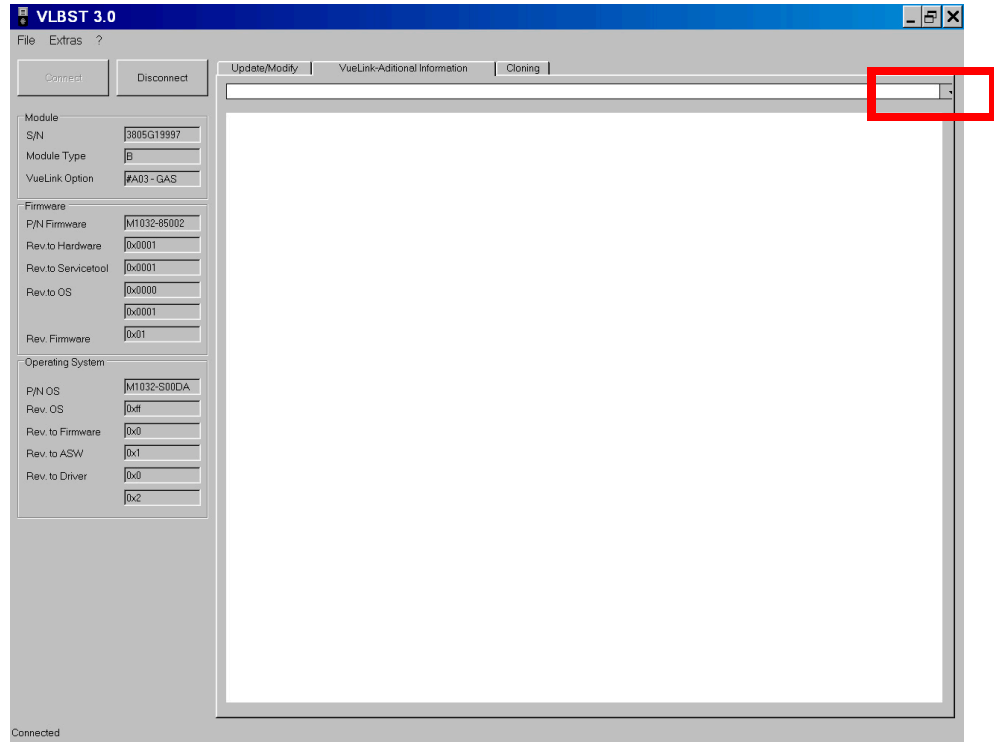


You can delete only one cloning file at a time.

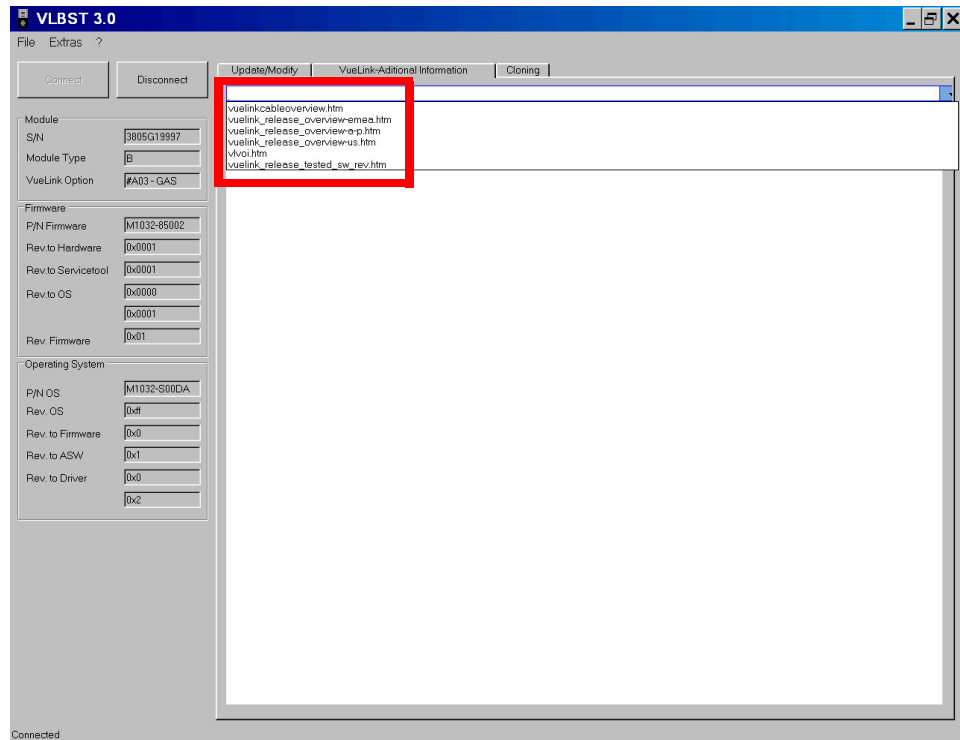
Accessing VueLink Additional Information

To access Additional Information related to VueLink, click on "VueLink-Additional Information" tab to access the informative pages as shown in next figures. The start window in this tab is empty that is not a fault.

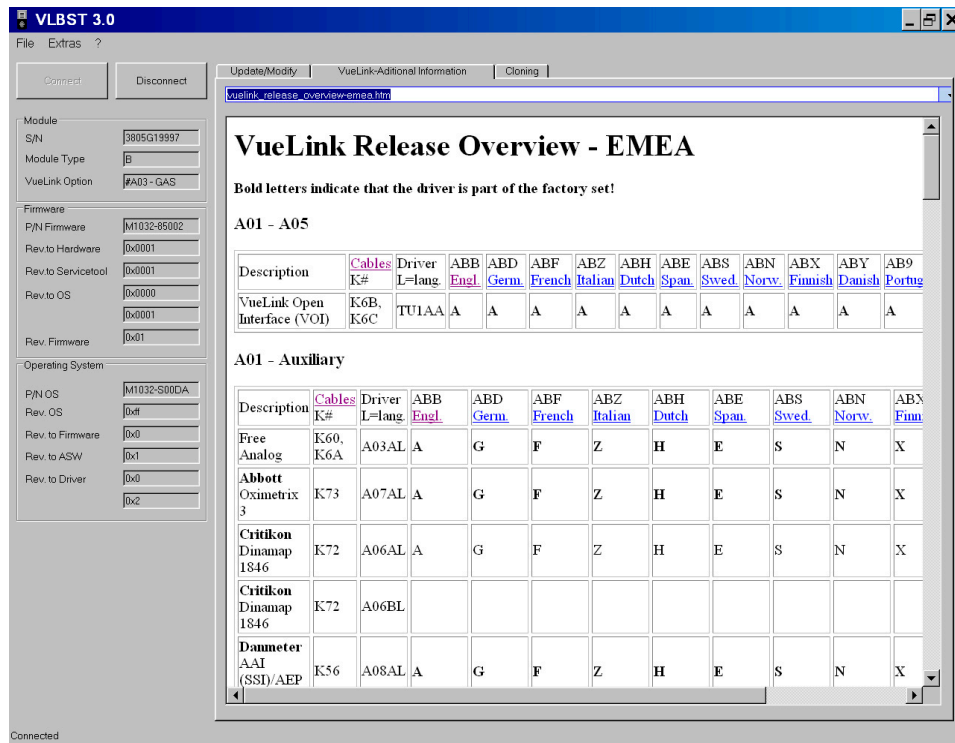
Open the pull down menu by clicking on the arrow.



Select an HTML-file from the list, like "vuelinkcableoverview.html".



In the window the information is available offline.



Adding New HTML Files Manually

New or updated HTML files are periodically uploaded in InCenter website <https://incenter.medical.philips.com>

at location Service > Software > Software Downloads > Patient Monitoring > Bedside Monitors>Modules / Clinical Measurements > M1032A - VueLink Parameter Module;

click "Additional Information", select required HTML file.

To update the VLBST 3.0 tool with these new/updated HTML files on your PC, download the files from InCenter website and save them into "C:\Program files\Philips\VLBST\VueLinkHTML" on your laptop and overwrite existing old file(s).