

Testing

To ensure that the MSE is functioning correctly, you must perform a performance check on it. Please refer to the "Testing and Maintenance" chapter of this service guide.

WARNING

When you disassemble/assemble a Measurement Extension, an applied part leakage current test must be performed before it is used again for monitoring.

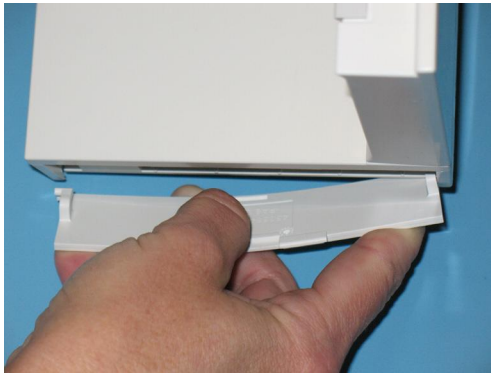
Battery Extension (865297) Repair and Disassembly

CAUTION

Always remove the battery and the SRL cable before performing any disassembly procedures on the battery extension.

Replacing the Battery Door

- 1 Open the battery door, hold it as shown below and bend it slightly until one hinge slides out. Then remove the door.



- 2 Insert the new battery door on one side, bending the door slightly until the hinge on the other side slides in.

Replacing Housing Parts and the Main Board

To replace parts of the battery extension housing, follow the procedure below until the respective part you wish to replace is accessible. Replace the part and reassemble the battery extension by following the performed steps in reverse order. If you need to replace the main board you will need to follow the procedure below until the end and disassemble the battery extension completely.

- 1 Unscrew two screws on the rear housing using a Torx T20 screwdriver.



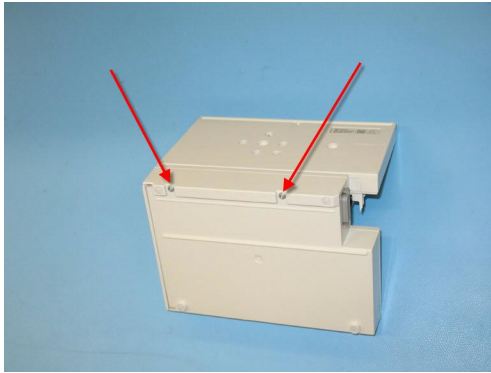
- 2 Lift up the front cover of the rear housing as shown below and slide it out. Be careful not to damage the flex cable.



The front cover of the rear housing and the metal plate are now accessible.



- 3 Unscrew the two screws on the bottom of the housing using a Torx T10 screwdriver.



The back part of the rear housing is now accessible. If you need to replace this part, make sure you transfer the serial number tag to the new housing part. Be sure not to lose the pins holding the housing together, as you will need them for reassembly.



- 4 To disassemble the bottom housing, open the battery door and pull out the plastic pin as shown below.



5 Repair and Disassembly

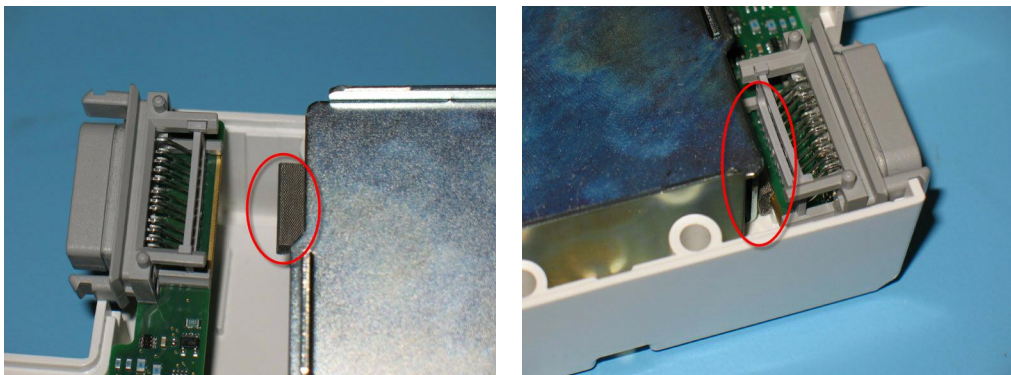
- 5 Separate the two bottom housing parts. Be careful not to damage the flex cable.



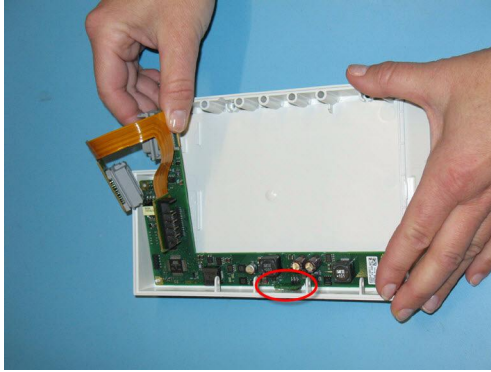
Now the battery cage can be lifted out of the housing.

NOTE

When reinserting the battery cage, make sure that the EMC shield is correctly positioned between the battery cage and the main board.



- 6 To remove the main board, lift it up as shown below and then pull it out. When replacing the main board, make sure that the small LED board (circled in red below) is positioned correctly.



All bottom parts of the housing as well as the main board are now accessible.



- 7 To reassemble the battery extension, perform the above steps in reverse order. Always make sure that you do not damage the flex cable.