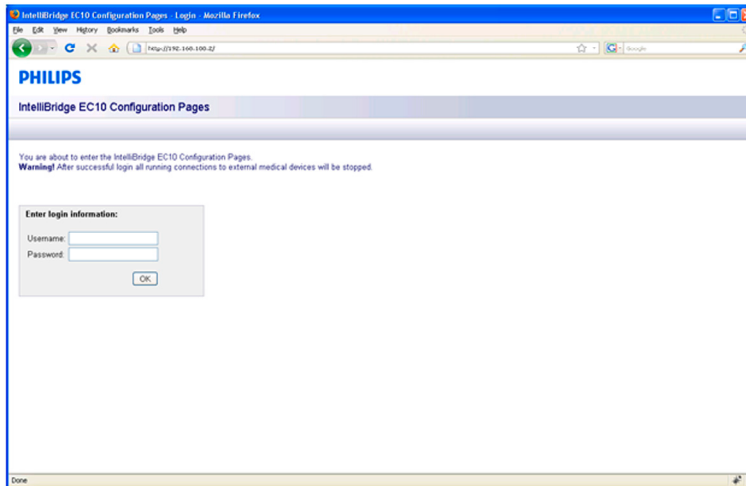


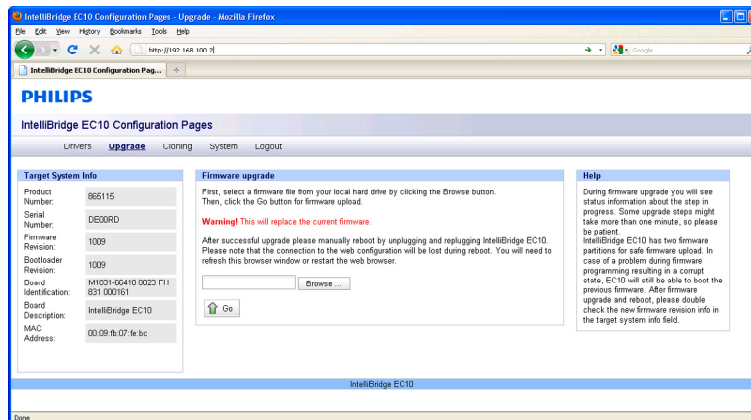
Accessing the IntelliBridge EC10 Service Interface

- 1 Connect the Service PC to the IntelliBridge EC10 module using a standard LAN cable.
- 2 Make sure that the TCP/IP settings of your Local Area Connection Properties on the Service PC are set to "**obtain IP Address automatically**".
- 3 Open your Internet Browser. Internet Explorer 7 and Firefox 3.0 are supported.
- 4 Enter **192.168.100.2** in the navigation field of the internet browser.
- 5 The EC10 Configuration screen will open up. Enter the following login information:
Username: service
Password: IBEC10



Firmware Upgrade

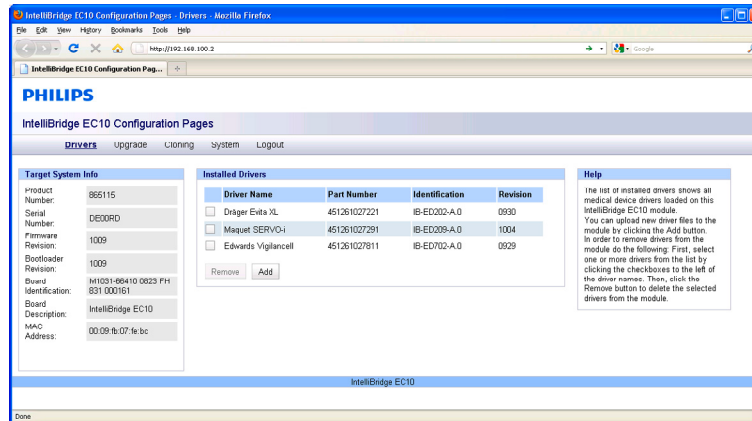
- 1 In the EC10 Configuration Screen select the tab **Upgrade**.
- 2 The Firmware upgrade window will open up.



- 3 Click on the **Browse** button and select the correct FW file.
- 4 Click **Go**.

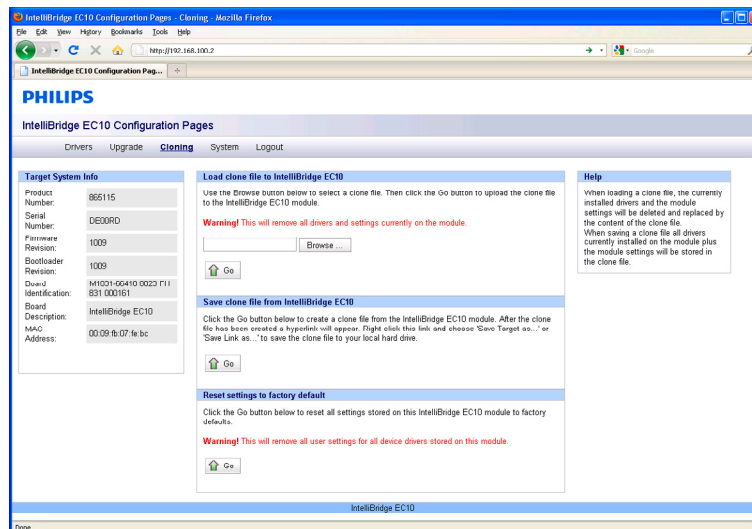
Uploading and Removing Device Drivers

- 1 In the EC10 Configuration Screen, select the **Drivers** Tab.
- 2 A list of the available drivers on the EC10 module will appear.
- 3 To upload a new driver, click the **Add** button, then click the **Browse** button and select the driver file. To remove one or more drivers, select the driver(s) from the list of available drivers and click the **Remove** button.



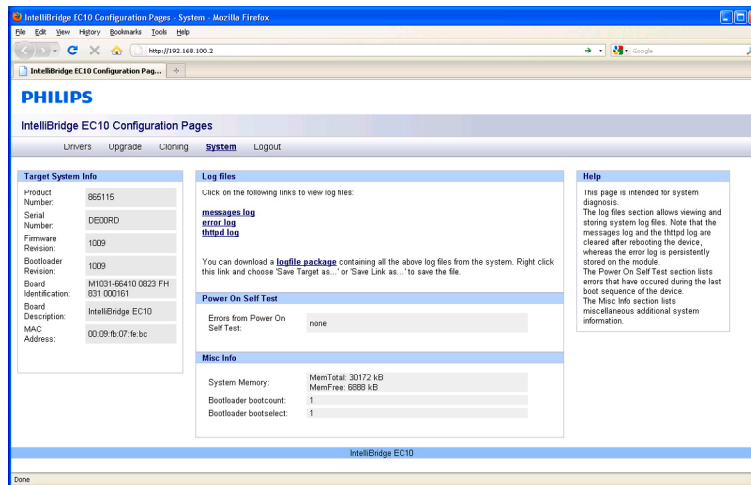
Generating and Uploading Clone Files

- 1 In the EC10 Configuration Screen, select the **Cloning** tab.
- 2 To generate a clone file, click the **Go** button in the *Save clone file from IntelliBridge EC10* window. A hyperlink will appear. Right click this link and select "Save Target as..." to save it to the desired location.
- 3 To upload a clone file click the **Browse** button in the *Load Clone File to IntelliBridge EC10* window and select the clone file. Then click **Go**.



Viewing System Information

- 1 In the EC10 Configuration Screen, select the **System** Tab. This screen allows you to view Log files and other system information.



Handing Over the Monitor

If you are handing over the monitor to the end-users directly after configuration, make sure that it is in Monitoring mode.

Ensure that the users have access to the following documentation delivered with the monitor:

- Training Program - M8000-9461x - for self-training on the monitor before use
- Instructions for Use - M8000-9001x - for more detailed questions during use

WARNING

All users must complete the training program and read the Instructions for Use before working with the monitor.

These training materials (in combination with this service guide) can also be used to train service personnel on how to use and service monitor.

Please refer to the Testing and Maintenance section of this service guide to determine the respective safety and performance tests to be performed before handing over the monitor to the customer.