
Display

Disassembly and reassembly procedures

Open the unit

WARNING

PATIENT MONITORING INTERRUPTION —.Make sure a patient is not being monitored.

WARNING

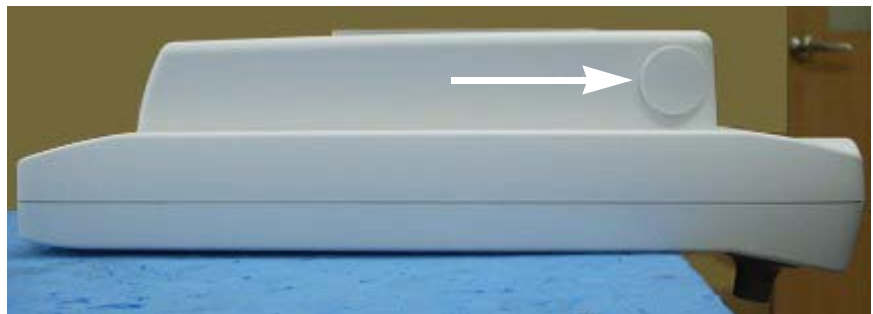
Due to possible high voltage present, use an insulated screwdriver at all times.

Whenever you open the unit, you need to perform the “[Electrical safety tests](#)” on page 7-3.

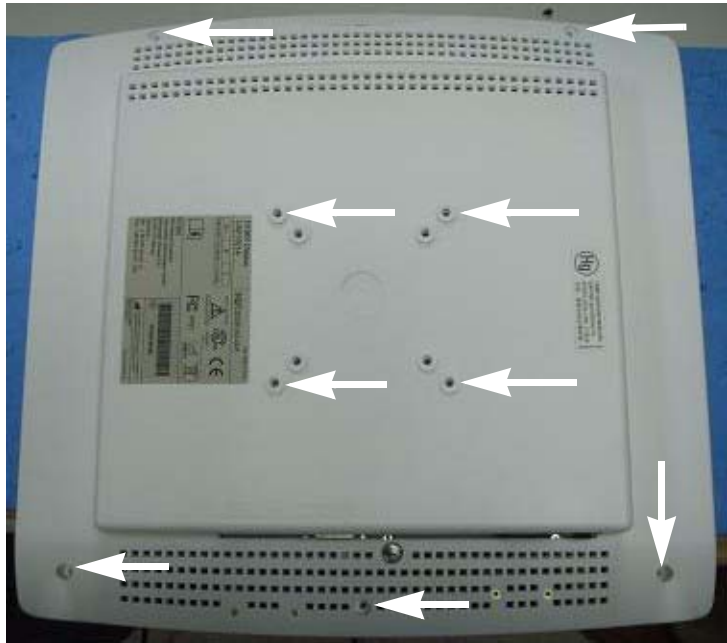
1. Turn the display power off at the rear power switch and disconnect all cables (USB, display and AC power).
2. Place the display as shown below to prevent damage to the main **TRIM KNOB**.



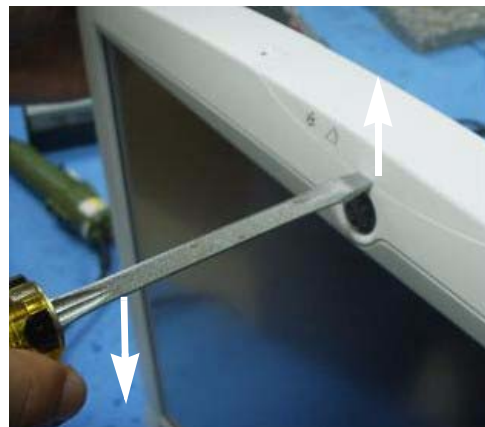
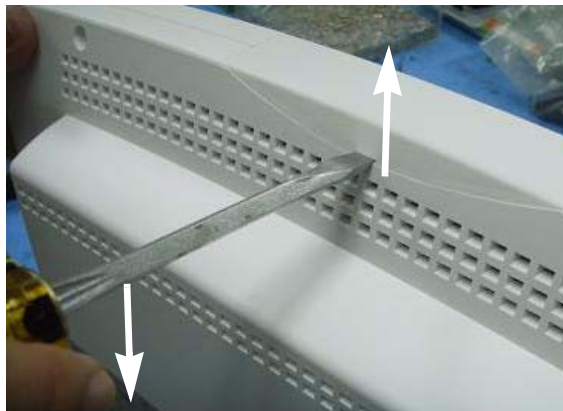
3. Remove the side **TRIM KNOB** by gently pulling the **TRIM KNOB**.



4. Remove all rear cover screws.



5. Remove mounting bracket.
6. Use a screwdriver to disassemble the alarm light cover.



7. Place the display as shown below to remove the rear cover.



8. Remove the rear cover.



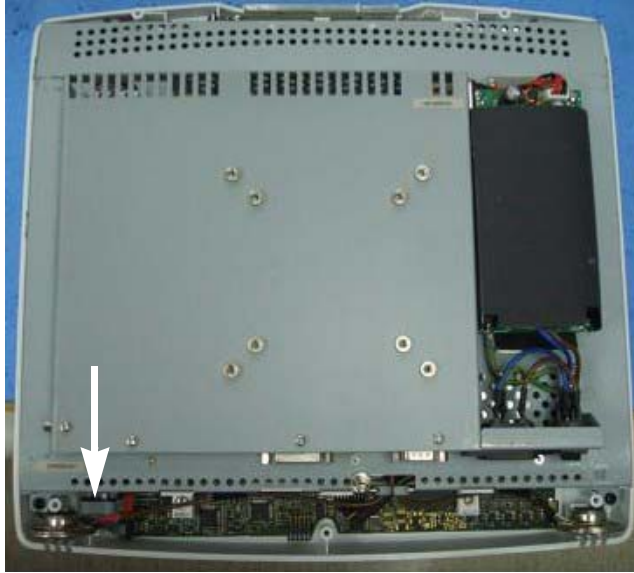
15-inch display



19-inch display

Replace the **TRIM KNOB** and rotary switch

1. Open the display as described on page 9-12.
2. Locate the rotary switch on the display.



15-inch display

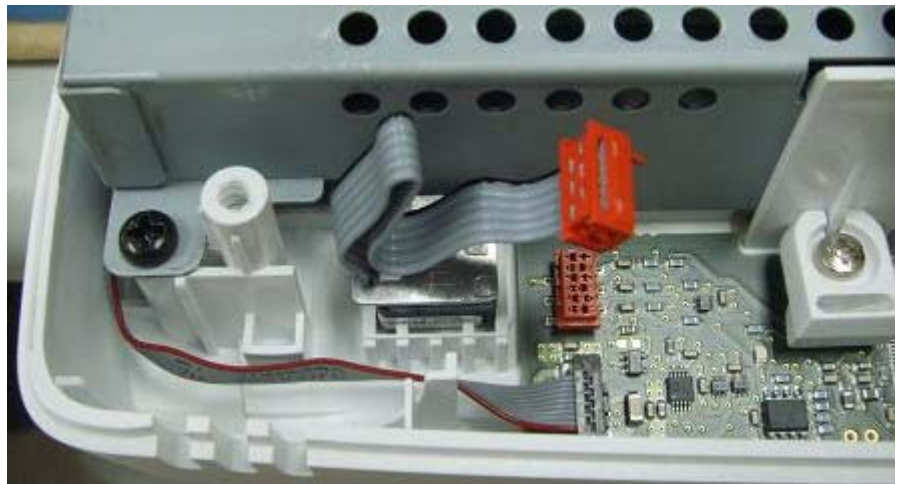


19-inch display

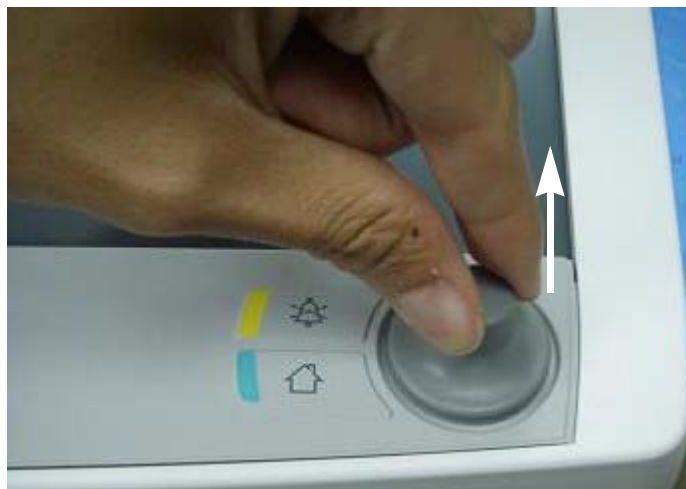
3. Pull the speaker to separate it from the front cover. Temporarily place the speaker on top of the metal enclosure.



4. Disassemble the connecting wire from the board.



5. Pull the main **TRIM KNOB**.



6. Use a wrench to disassemble the rotary switch.



7. Replace the rotary switch and the main **TRIM KNOB**.
8. Reassemble the display in the reverse order of disassembly.

NOTE

The torque specification for tightening the screws and encoder washer/nut is $1.13 + 0.11$ Nm (10.0+1.0 lbf-in).

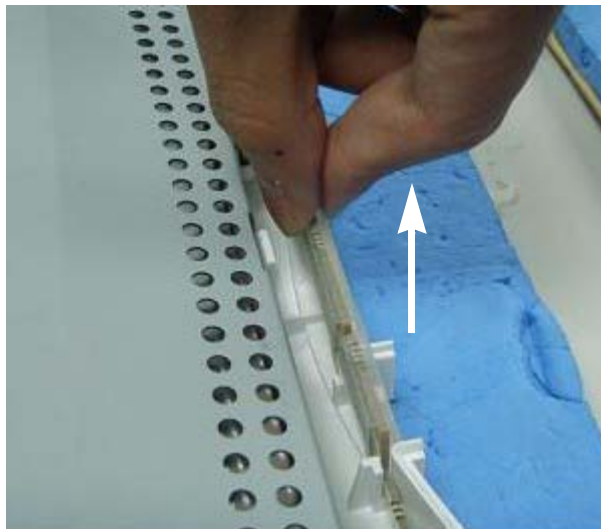
9. Complete the procedures in "**Recommended checkout**" on page 9-21.

Replace the alarm light and alarm light enclosure

1. Open the display as described on page 9-12.
2. Locate the alarm light on the display.



3. Pull the alarm light to separate it from the front cover.



-
4. Disassemble the connecting wire from the board.



5. Disassemble the protective cover from the alarm light to replace the alarm light board.



6. Replace the alarm light board and while reassembling the display, replace the alarm light enclosure.
7. Reassemble the display in the reverse order of disassembly.

NOTE

The torque specification for tightening the screws and encoder washer/nut is 1.13 ± 0.11 Nm (10.0±1.0 lbf-in).

8. Complete the procedures in **“Recommended checkout”** on page 9-21.

Recommended checkout

Perform the recommended checkout procedures for the applicable FRU.

FRU description	Functional checkout procedures
TRIM KNOB and rotary switch	<ul style="list-style-type: none">■ "Electrical safety tests" on page 5-3■ "Patient monitor functional tests" on page 7-4
Alarm light and alarm light enclosure	<ul style="list-style-type: none">■ "Electrical safety tests" on page 5-3■ "Patient monitor functional tests" on page 7-4